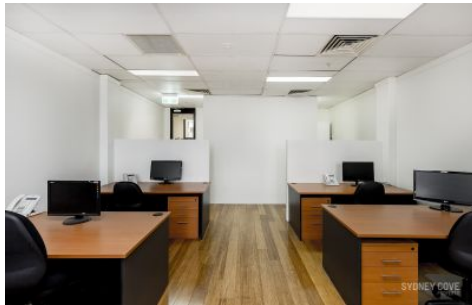
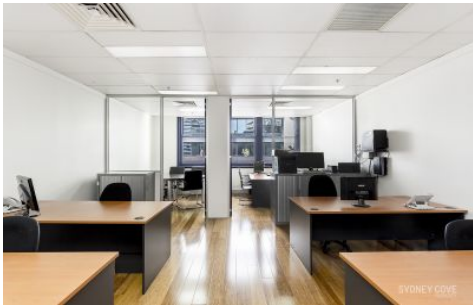


SYDNEY COVE

PROPERTY



606/379-383 Pitt Street Sydney NSW

Fayworth House is a seven storey building comprising of both ground floor retail and six floors of office suites. This security building is serviced by two modern lifts as well as both male & female amenities located on each floor. This building is perfectly located on the corner of Pitt and Liverpool Streets directly opposite World Square and close to the Downing Street Law Courts, Town Hall & Museum Stations is a five minute walk to Pitt Street Mall.

Key Points:

- 53 sqm floorplan with good natural light
- Main area fitted with 4 workstations
- Manager's office & team meeting room
- Formal entry & great size storage room
- Ducted air cond, comms area with wiring
- Secure building, lift access & amenities

Building Size : 53 sqm

View : <https://www.sydneycoveproperty.com/sale/nsw/sydney-city/sydney/commercial/offices/6215975>



Grant Ashby
02 9241 1288



Gareth Bootland
02 8259 3333