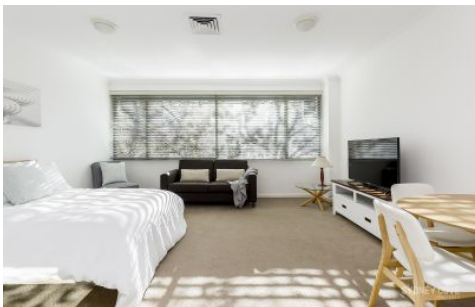


SYDNEY COVE

PROPERTY



22 Sir John Young Crescent WOOLLOOMOOLOO NSW

1 🏠 1 🚗

Offering amazing convenience and a superb Sydney lifestyle, this fully furnished studio is located in the 'Domain Apartments' which is centrally located between the CBD and prestigious Eastern Suburbs. This blue chip address offers fantastic building facilities, ideal for executives.

View : <https://www.sydneycoveproperty.com/lease/nsw/sydney-city/woolloomooloo/residential/apartment/6215965>

Key Points:

- * Large studio space with good living area
- * Modern, full kitchen with quality appliances
- * Luxurious bathroom, internal laundry, A/C
- * Building features concierge, gymnasium & spa
- * Breathtaking roof terrace with amazing views



Cherie Xue
02 9241 1288



Kayla Caldwell
02 9241 1288