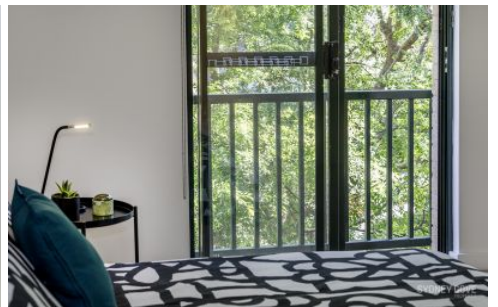


SYDNEY COVE

PROPERTY



8/22 Eaton Street NEUTRAL BAY NSW

2 2 1

Idyllically placed in a tranquil enclave, this free flowing apartment in 'Eaton Park' is perfect for a low maintenance, luxury lifestyle with convenience. Located on the top floor of a very well maintained boutique development containing 18 apartments, this apartment is very private providing a feeling of living in the tree tops. Perfectly positioned, with parks, playgrounds, transport, Sydney Harbour & local café scene only walking distance away.

Features include:

- Spacious open plan living and dining areas to balcony
- Leafy balcony for effortless indoor/outdoor entertaining
- Master bedroom with built-ins, ensuite & Juliette balcony
- Granite gas kitchen with stainless steel Smeg appliances
- Internal laundry, hall storage, secure undercover parking
- Immaculately maintained with attractive landscaped

Price : \$ 1,100,000

View : <https://www.sydneycoveproperty.com/sale/nsw/north-shore-lower/neutral-bay/residential/apartment/6215937>

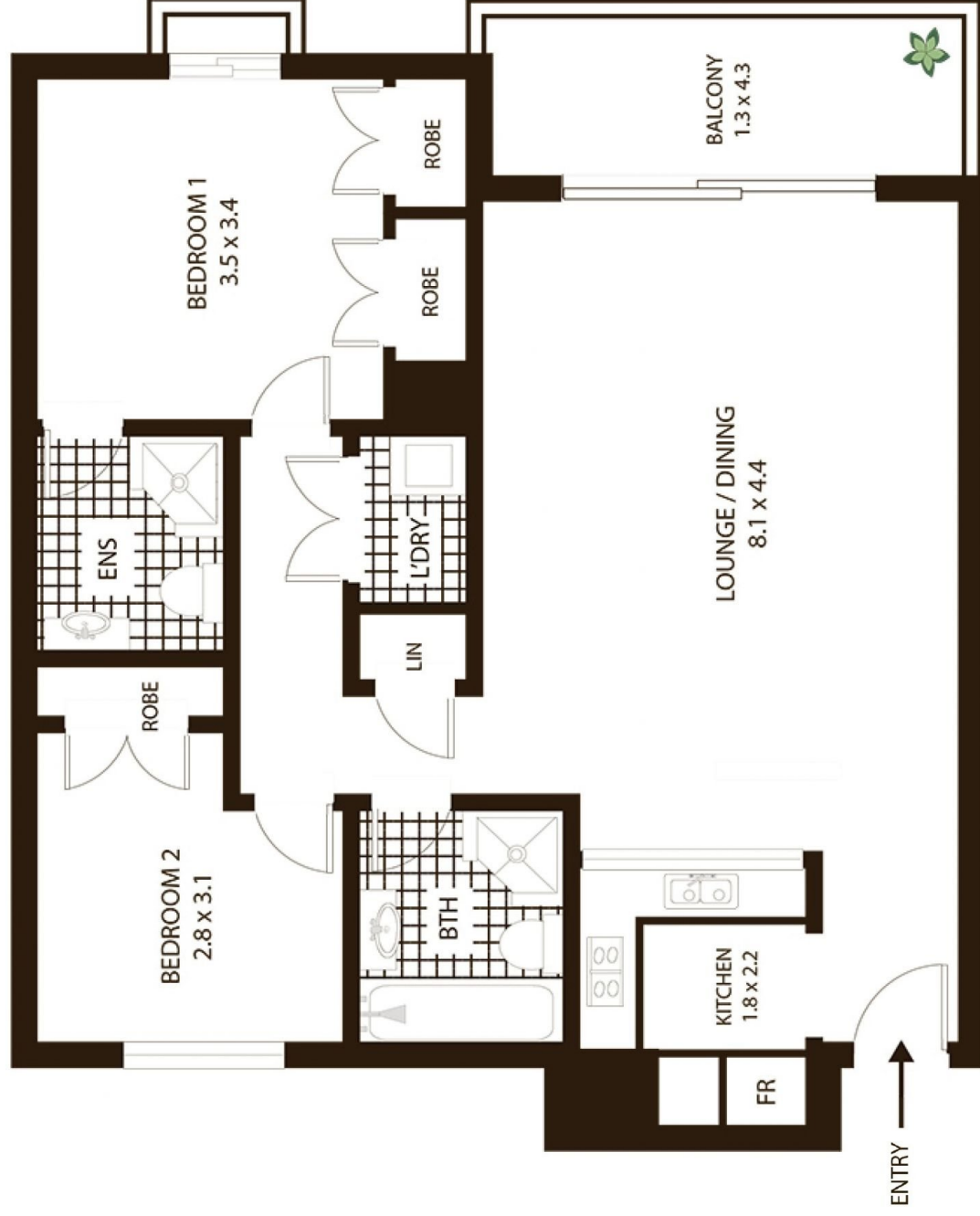


Bryn Fowler
02 8259 3333



Grant Ashby
02 9241 1288

<https://www.sydneycoveproperty.com>



8/22 Eaton St, Neutral Bay

All measurements are approximate only. Plan is provided as an indication of layout