

SYDNEY COVE

PROPERTY



1002/38 Bridge Street SYDNEY NSW

1 

This studio apartment is located in the contemporary Bridgeport building, only 300 metres to Circular Quay, in Sydney's prestigious Northern CBD. Bridgeport is in good company with close by Customs House, Café Sydney, Sydney Opera House and a host of cultural attractions. Enjoy an enviable lifestyle or invest with confidence in a blue chip building and location.

- Perfect inner city investment opportunity, or an ideal CBD home away from home in an in-demand locale
- Enjoying absolute convenience, within walking distance to Sydney's financial district, and Circular Quay
- Recently rented for \$530 per week, with low outgoings with assured capital growth
- Well-proportioned throughout, with ducted air-conditioning

Type : Apartment

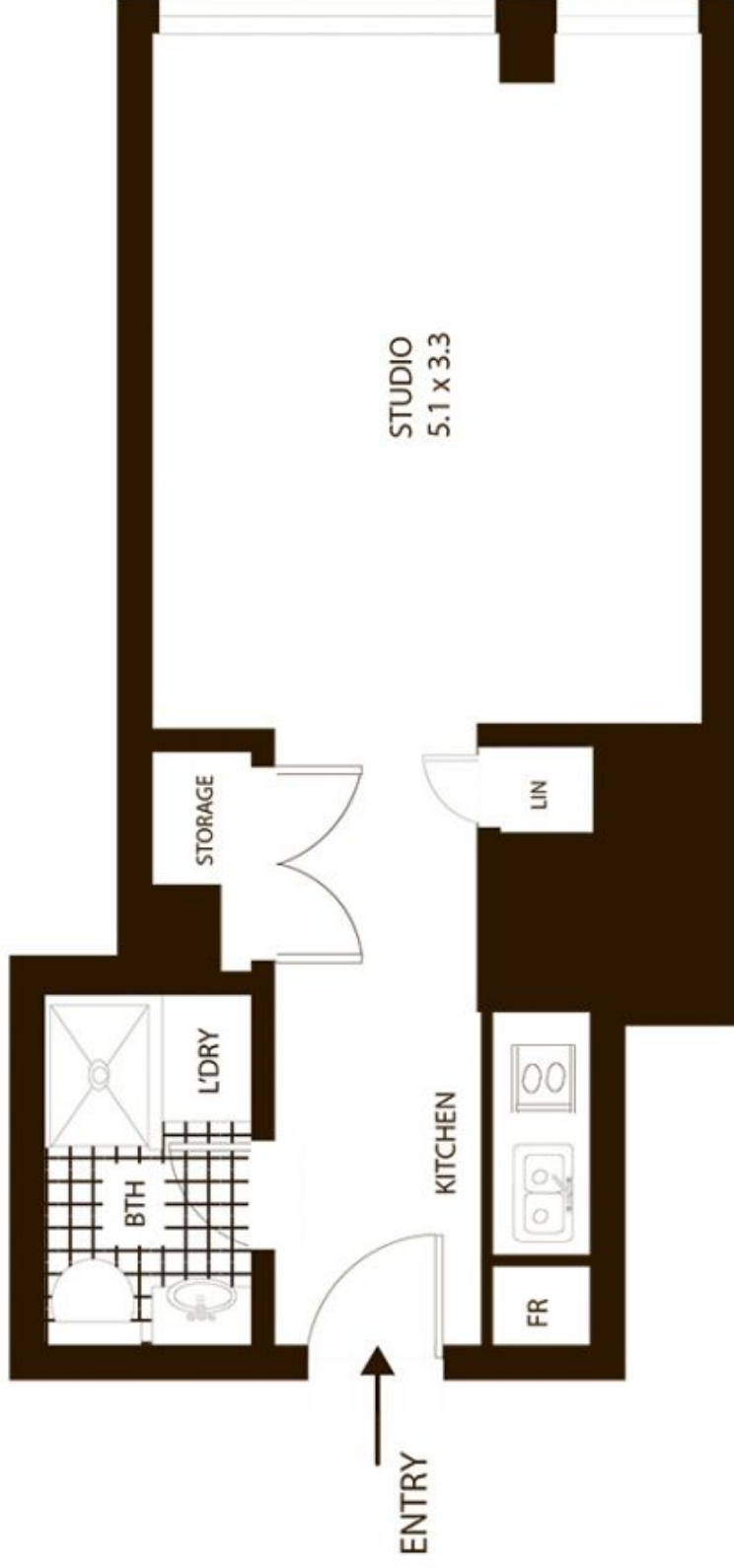
View : <https://www.sydneycoveproperty.com/sale/nsw/sydney-city/sydney/residential/apartment/6215921>



Bryn Fowler
02 8259 3333

[For full version visit the website](https://www.sydneycoveproperty.com)

<https://www.sydneycoveproperty.com>



1002/38 Bridge St, Sydney

All measurements are approximate only. Plan is provided as an indication of layout

