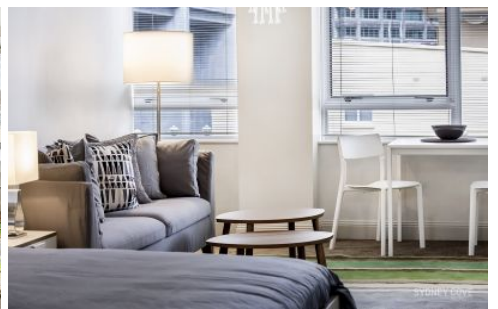


SYDNEY COVE

PROPERTY



38 Bridge Street SYDNEY NSW

1 1

Boasting views over Bridge Street and plenty of natural light this apartment is definitely one to inspect. Positioned on level 16 of the contemporary, sought-after Bridgeport building, this light & airy studio apartment is only moments to the Rocks, Circular Quay, and the Northern city's finest shopping bars and restaurants.

View : <https://www.sydneycoveproperty.com/lease/nsw/sydney-city/sydney/residential/apartment/6215840>

Views over Bridge street to beautiful heritage buildings
High ceilings, granite kitchen with a built in wardrobe
Great condition throughout, with ducted air-conditioning
Fully tiled bathroom with laundry, inc washer/dryer
Onsite Building Manager, gymnasium and secure access



Kayla Caldwell
02 9241 1288



Cherie Xue
02 9241 1288