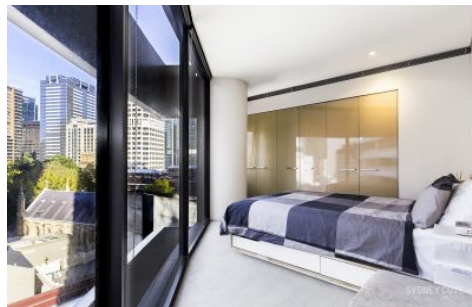


SYDNEY COVE

PROPERTY



129 Harrington Street SYDNEY NSW

1  1 

Located on the South East corner of the prestige 'Cove' this unique curved apartment offers a captivating view of the CBD from the floor to ceiling glass. Located in the Heart of the Rocks it is moments to Wynyard station, shops & restaurants.

Building Size : 56 sqm
View : <https://www.sydneycoveproperty.com/lease/nsw/sydney-city/sydney/residential/apartment/6215824>

Key Points:

- * Spacious open plan living area, curved aspect
- * Sweeping city views, floor to ceiling windows
- * Large galley kitchen & quality appliances
- * Double bedroom with timber built in robes
- * Modern stone bathroom & walk in shower
- * Ducted air-conditioning & internal laundry
- * 24 hour concierge, amazing lap pool & gym



Kayla Caldwell
02 9241 1288



Cherie Xue
02 9241 1288