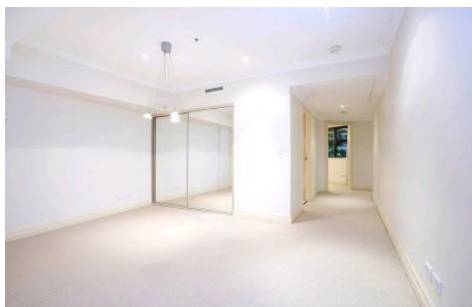


# SYDNEY COVE

PROPERTY



## 2 Bond Street SYDNEY NSW

1 1

Positioned in the centre of the atmospheric CBD, this spacious apartment is part of the popular 'Mantra' building on George Street. A hive of convenience, this central pad is surrounded by all the excitement of the busy city, with buses, trains, restaurants & bars all within moments of your door.

### Key Points

- \* Impressive layout, with unique floorplan
- \* Large stone kitchen, quality appliances
- \* Double bedroom & separate study area
- \* Modern stone bathrooms, luxury finish
- \* Air-con, internal laundry, video intercom
- \* Access to hotel amenities incl. concierge
- \* Impressive roof top pool, spa and gym

**View :** <https://www.sydneycoveproperty.com/lease/nsw/sydney-city/sydney/residential/apartment/6215796>



**Cherie Xue**  
02 9241 1288



**Kayla Caldwell**  
02 9241 1288

NB: Photos are of an identical apartment