

SYDNEY COVE

PROPERTY



3 Macquarie Street SYDNEY NSW

2  2  1 

Take advantage of this truly rare opportunity to secure one of the world's most desirable apartments! This two bedroom apartment is located in the prestigious and famous 'Bennelong' apartments, positioned next to the Sydney Opera house. With arguably some of the best views on offer it is surrounded by world class restaurants, shops, Circular Quay with both the ferry terminal and rail.

Building Size : 111 sqm
View : <https://www.sydneycoveproperty.com/lease/nsw/sydney-city/sydney/residential/apartment/6215745>

Key point:

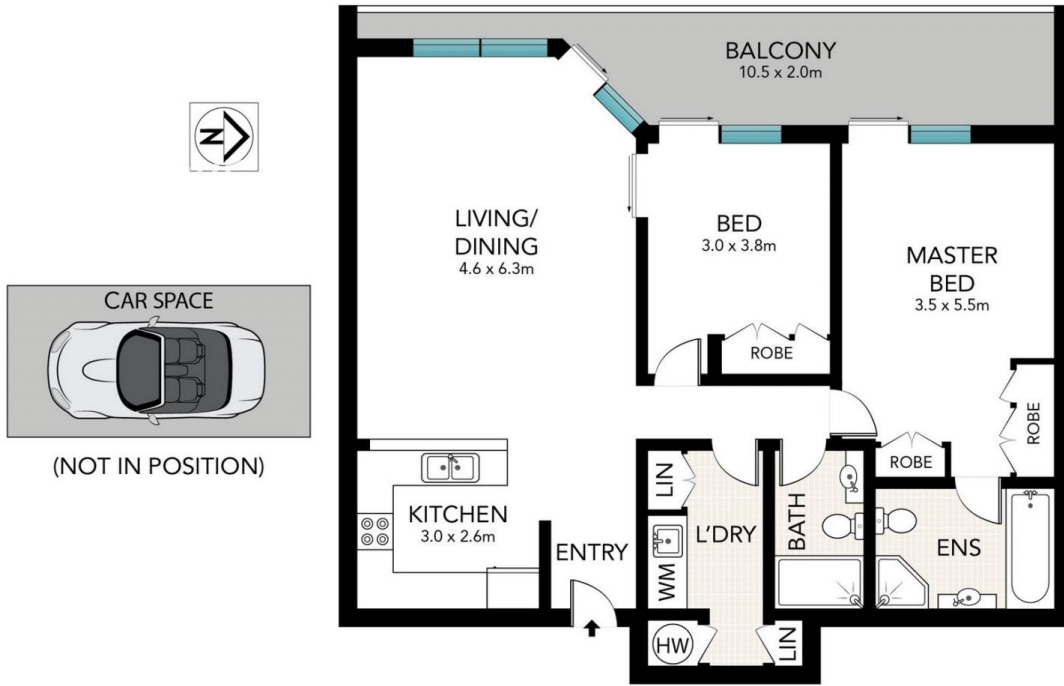
- * Luxurious interior with unbeatable Harbour Bridge views
- * Two double bedrooms, both with built in wardrobes
- * Open plan living area leading to entertainer's balcony
- * Modern stone kitchen with quality European appliances
- * Marble bathroom & master ensuite with spa bath
- * Internal laundry, ducted air-conditioning, intercom entry
- * 24 concierge, indoor lap pool & gym, secure car space



Kayla Caldwell
02 9241 1288



Cherie Xue
02 9241 1288



**SYDNEY
COVE**
PROPERTY