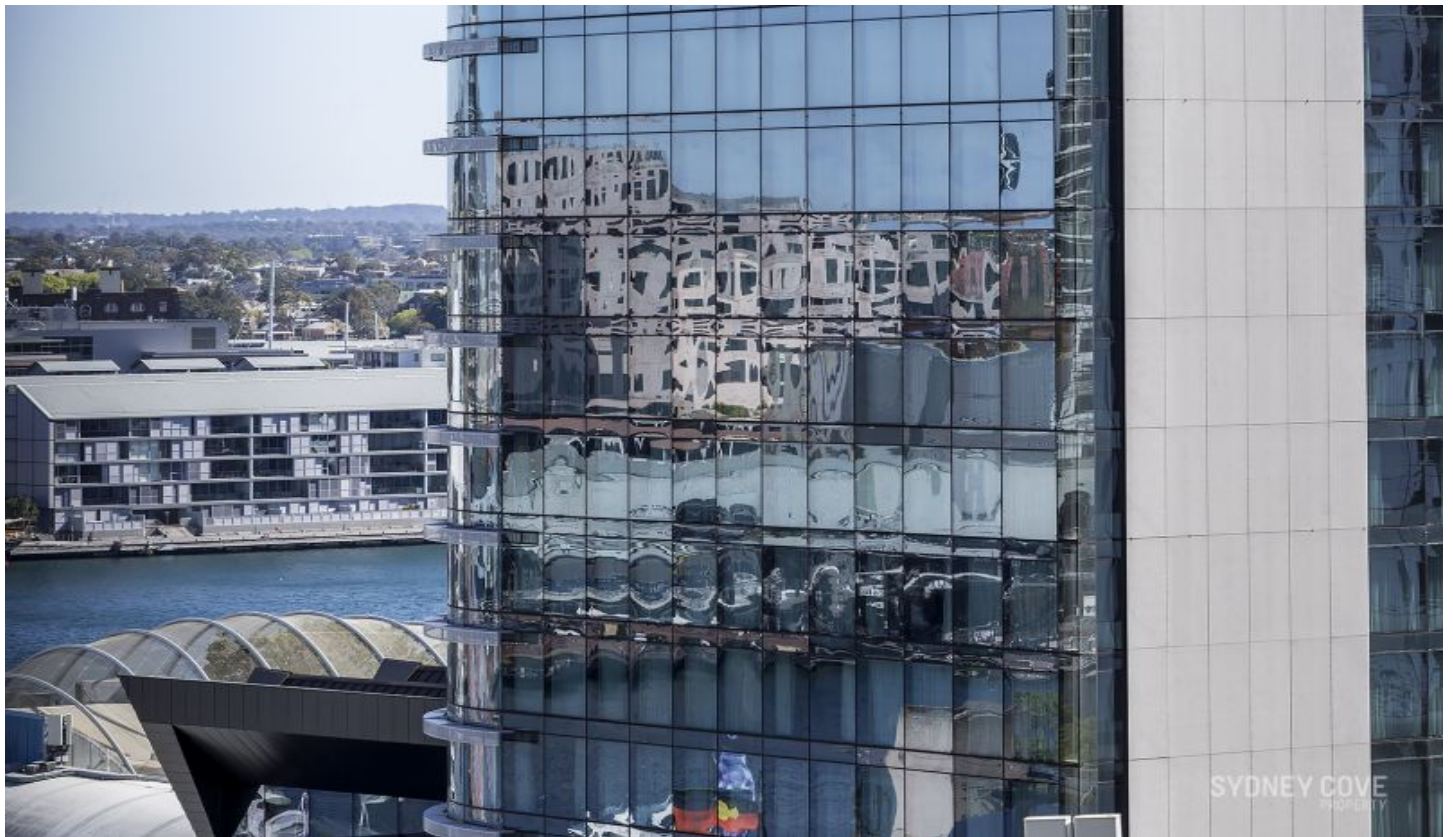


# SYDNEY COVE

PROPERTY



**222 Sussex Street SYDNEY NSW**

2 2 1

Enjoy the energy and excitement of a busy CBD lifestyle from the massive unfurnished apartment positioned in the executive building 'Astoria Tower'. This apartment offers a unique city layout and is located moments to Darling Harbour & Town Hall station.

**Building Size** : 109 sqm  
**View** : <https://www.sydneycoveproperty.com/lease/nsw/sydney-city/sydney/residential/apartment/6215740>

## Key Points

- \* Spacious living area and formal dining area
- \* Enclosed sunroom with access to open balcony
- \* Huge gourmet gas kitchen with casual dining
- \* Two double bedrooms with built in wardrobes
- \* Modern bathrooms, ensuite with large spa bath
- \* Internal laundry, ducted A/C and intercom entry
- \* Concierge, pool, gym, games room & squash court



**Kayla Caldwell**  
02 9241 1288



**Cherie Xue**  
02 9241 1288

