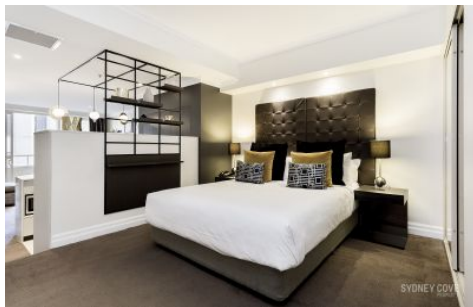
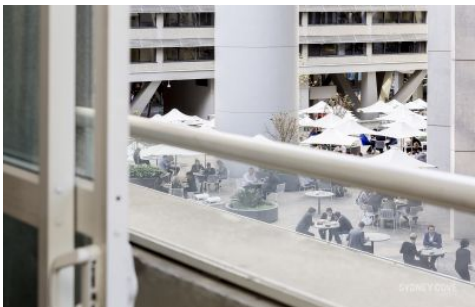


SYDNEY COVE

PROPERTY



2 Bond Street SYDNEY NSW

1 

Such a rare opportunity to own a solid, blue chip investment in the highly regarded Mantra building, near Circular Quay and ideally positioned with the forthcoming light rail at your doorstep. The apartment is in the hotel pool with no management fees to pay, low strata, high net returns along with proven capital growth - all boxes are ticked. The property provides certainty of income which rises with regular scheduled rental increases, an absolutely hassle free, quality investment.

Type : Apartment

View : <https://www.sydneycoveproperty.com/sale/nsw/sydney-city/sydney/residential/apartment/6215728>

*The first opportunity to own the property in over 20 years

*Light open views overlooking Australia Square, with Juliet balcony

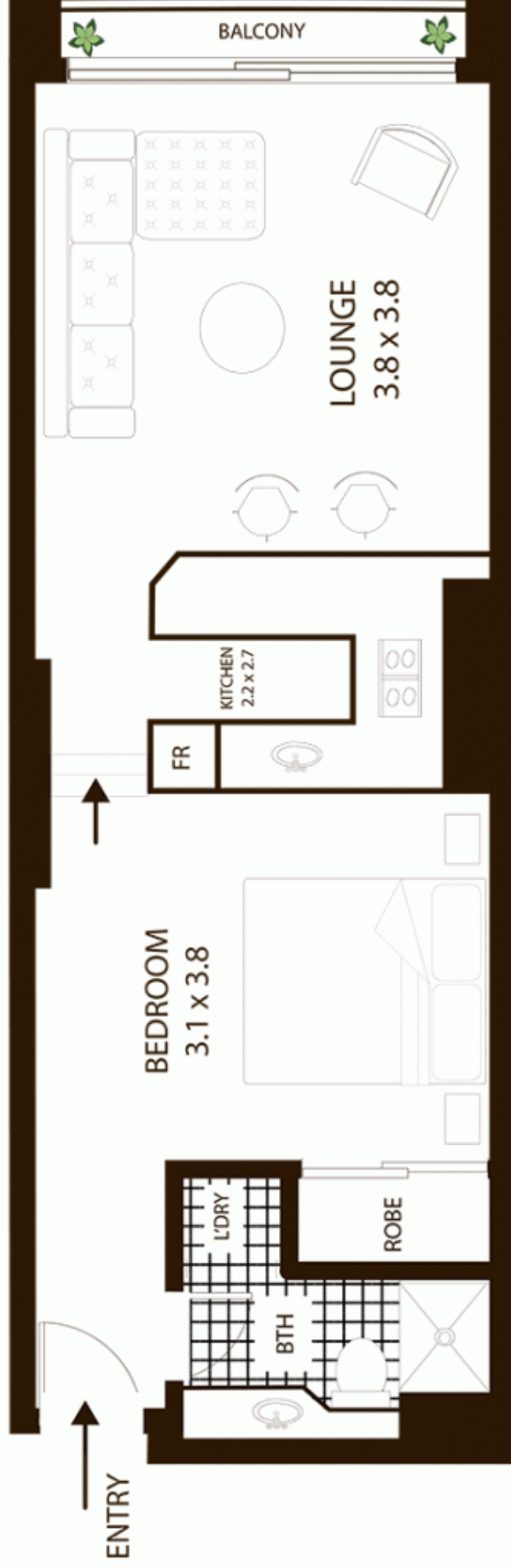
*Well appointed, recently renovated & refurbished throughout



Bryn Fowler
02 8259 3333

[For full version visit the website](https://www.sydneycoveproperty.com)

<https://www.sydneycoveproperty.com>



216/2 Bond St Sydney

All measurements are approximate only. Plan is provided as an indication of layout

