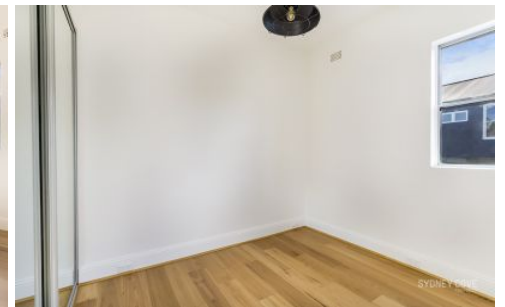
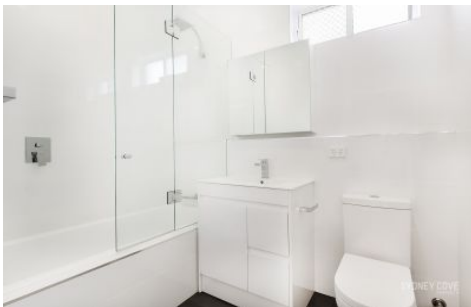


# SYDNEY COVE

PROPERTY



## 34 Tamarama Street TAMARAMA NSW

4 1 1

Nestled in a corner position on a quiet street with both front and side access lies an affordable and rare opportunity to enter the beach side market of Tamarama. With the cafe's, shops, restaurants and public transport of Bondi Road within walking distance from your door step, this home perfectly suits those after an unbeatable lifestyle.

**View :** <https://www.sydneycoveproperty.com/lease/nsw/eastern-suburbs/tamarama/residential/house/6215723>

### Key Points

- \* Four bedrooms, built in wardrobes
- \* Timber flooring throughout home
- \* Great sized kitchen and meals area
- \* Easily maintainable front/ backyard



**Cherie Xue**  
02 9241 1288



**Kayla Caldwell**  
02 9241 1288