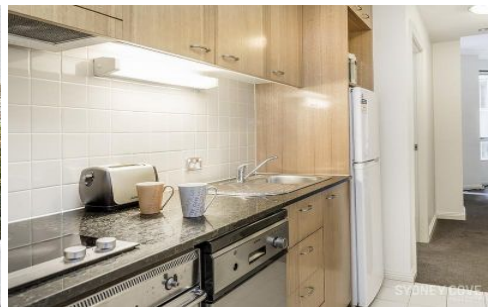
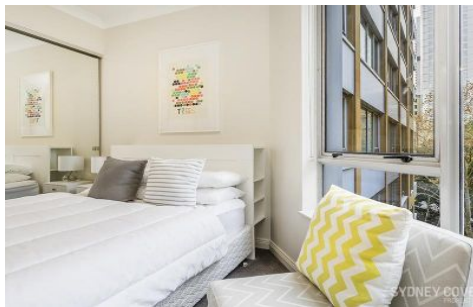
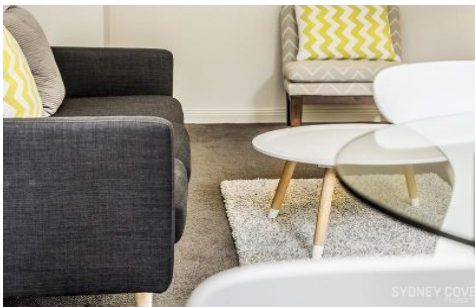


SYDNEY COVE

PROPERTY



38 Bridge Street SYDNEY NSW

1 1

Located in the "Bridgeport" building, this one bedroom apartment is renovated throughout, with stylish furniture it is centrally located only a short walking distance to Circular Quay station, Martin Place, Bars & Restaurants. This property wont last long!

View : <https://www.sydneycoveproperty.com/lease/nsw/sydney-city/sydney/residential/apartment/6215650>

Key Points:

- * Near new furniture throughout
- * Galley styled kitchen, Stone finishes
- * Fresh Carpet and paint throughout
- * Double bedroom, built in wardrobe
- * Gym facilities, Lift access, intercom



Cherie Xue
02 9241 1288



Kayla Caldwell
02 9241 1288