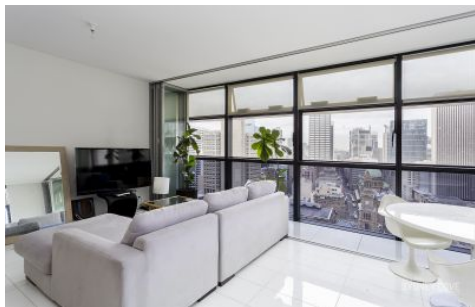


SYDNEY COVE

PROPERTY



101-105 Bathurst Street SYDNEY NSW

1 1 1

Enjoy the impressive city landscape from this modern, north facing one bedroom apartment located in the extremely popular 'Lumiere' Building. Positioned in the hub of the CBD you are only moments to the QVB, World Square, Hyde Park, Cockle Bay and Town Hall station. This award winning development features world class facilities, including a 24 hour concierge, impressive indoor/outdoor pool, gym, cinema and variety of common spaces.

Key Points

- * Open plan north facing living room
- * Large bedroom with built-in robe
- * Ultra-modern designer bathroom
- * Modern stone kitchen, ample storage
- * Air conditioning & internal laundry

View : <https://www.sydneycoveproperty.com/lease/nsw/sydney-city/sydney/residential/apartment/6215541>



Cherie Xue
02 9241 1288



Kayla Caldwell
02 9241 1288

<https://www.sydneycoveproperty.com>