

SYDNEY COVE

PROPERTY



365-377 Kent Street SYDNEY NSW

1 1

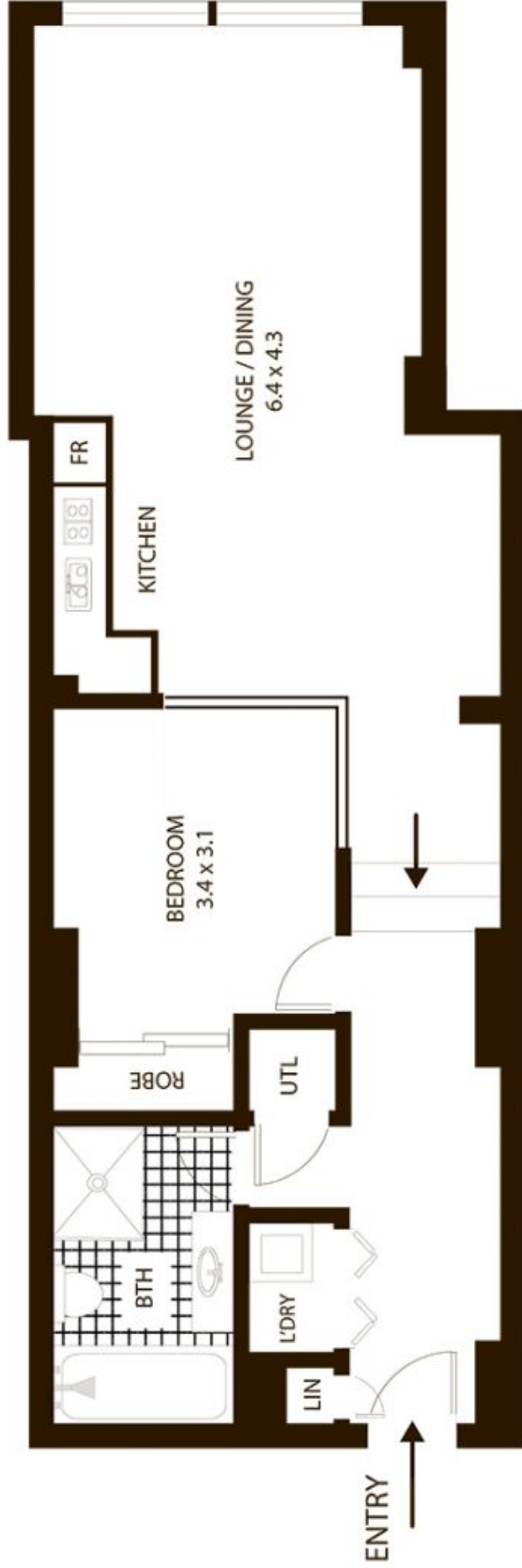
Located in the sought after Windsor on Kent is this stunning apartment. On the door step to the CBDs feature attractions this is an in demand location close to Darling Harbour, Town Hall, Pitt Street Mall, Hyde Park, QVB and the Botanical Gardens. An excellent investment opportunity with strong rental returns or a great city pad for those looking to owner occupy.

View : <https://www.sydneycoveproperty.com/sale/nsw/sydney-city/sydney/residential/apartment/6215518>

- Large apartment spanning 57sqm internally with high ceilings
- Open plan design, separate laundry and modern bathroom
- East facing with city views and bathed in natural light
- Bedroom with mirrored built in robes, spacious living area and separate dining
- Open plan kitchen with stone bench tops and gas cook top



Monique Lavers
82593333



365-377 Kent St Sydney

All measurements are approximate only. Plan is provided as an indication of layout