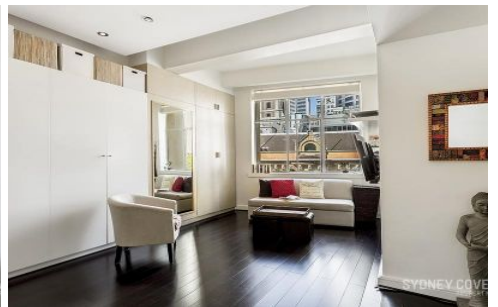
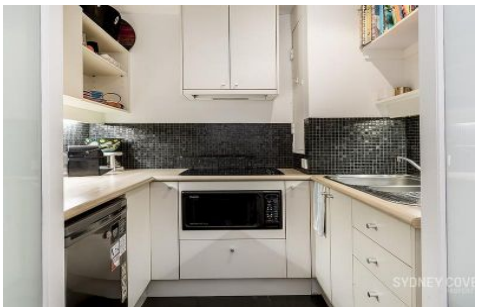


SYDNEY COVE

PROPERTY



4 Bridge Street SYDNEY NSW

1 1

Saturated with natural light and located in one of the CBD's heritage buildings is this tastefully designed studio apartment. This apartment offers impressive views of the city in an unsurpassed location within walking distance to Circular Quay Train Station, bars and restaurants.

View : <https://www.sydneycoveproperty.com/lease/nsw/sydney-city/sydney/residential/apartment/6215485>

Key Points

- *Open plan living, timber floors
- *Good sized bathroom w/ bath
- *Large kitchen with stone bench
- *Secure building with intercom
- *Building features roof top pool



Cherie Xue
02 9241 1288



Grant Ashby
02 9241 1288