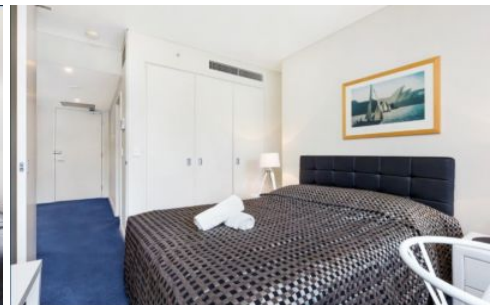


# SYDNEY COVE

PROPERTY



## 23 Shelley Street SYDNEY NSW

1 1

This refined one bedroom apartment situated in King Street Wharf precinct is the perfect city pad. With quality furnishing throughout this open plan apartment is located between Darling Harbour & Barangaroo and is only moments to a large variety of restaurants, bars, entertainment and only a short walk to Wynyard Station.

### Key Points

- \* Generous sized lounge & dining room
- \* Gourmet kitchen with gas appliances
- \* Tiled bathroom plus internal laundry
- \* Stylish furnishings & quality fittings
- \* Ducted A/C, Intercom, Concierge lobby
- \* Heated outdoor pool, Gym & Sauna

**Building Size** : 60 sqm  
**View** : <https://www.sydneycoveproperty.com/lease/nsw/sydney-city/sydney/residential/apartment/6215484>



**Kayla Caldwell**  
02 9241 1288



**Cherie Xue**  
02 9241 1288