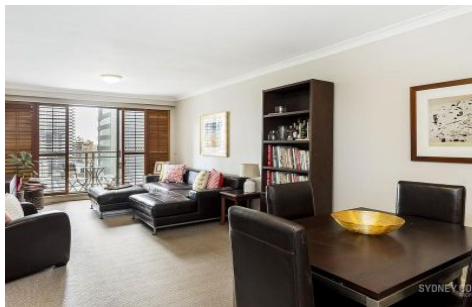


SYDNEY COVE

PROPERTY



281 Elizabeth Street SYDNEY NSW

2  2  1 

Furnished apartment located in 'Regency Hyde Park' which offers all the essentials for a busy lifestyle including concierge, pool, spa, sauna and gymnasium. Convenient living extends beyond the building with cafes, restaurants, Hyde Park and supermarket at your doorstep.

View : <https://www.sydneycoveproperty.com/lease/nsw/sydney-city/sydney/residential/apartment/6215419>

Key Points

- * Large and modern kitchen with gas cooking
- * Open plan living & dining leading to balcony
- * Double bedrooms, master with walk-in robe
- * Two large bathrooms, one with bath tub
- * Secure parking space and intercom entry
- * Air-conditioning & internal laundry
- * Concierge, large indoor pool, gym & sauna



Cherie Xue
02 9241 1288



Grant Ashby
02 9241 1288