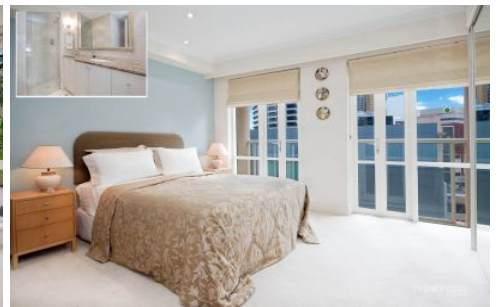


SYDNEY COVE

PROPERTY



2 Bond Street SYDNEY NSW

3 2 2

A rare opportunity to reside in a Penthouse style apartment positioned in the 4.5 star Mantra Hotel. Ideally located in the heart of the CBD, you are only moments to Circular Quay, The Rocks as well as some of Sydneys finest restaurants and retail outlets.

Building Size : 166 sqm
View : <https://www.sydneycoveproperty.com/lease/nsw/sydney-city/sydney/residential/apartment/6215388>

Key Features:

- * Three double bedrooms with built-ins
- * Large balcony perfect for entertaining
- * Two quality bathrooms with marble
- * Renovated kitchen with stone benchtop
- * Ducted air-conditioning, internal laundry
- * Two secure car spaces, secure building
- * Total of 166m2 of indoor & outdoor space
- * 24h concierge, rooftop pool, spa & gym



Cherie Xue
02 9241 1288



Grant Ashby
02 9241 1288