

SYDNEY COVE

PROPERTY



281 Elizabeth Street SYDNEY NSW

2 2 1

Furnished apartment located in 'Regency Hyde Park' which offers all the essentials for a busy lifestyle including concierge, pool, spa, sauna and gymnasium. Convenient living extends beyond the building with cafes, restaurants, Hyde Park and supermarket at your doorstep.

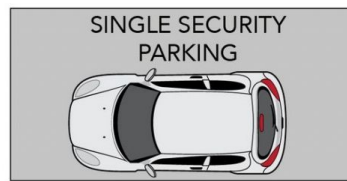
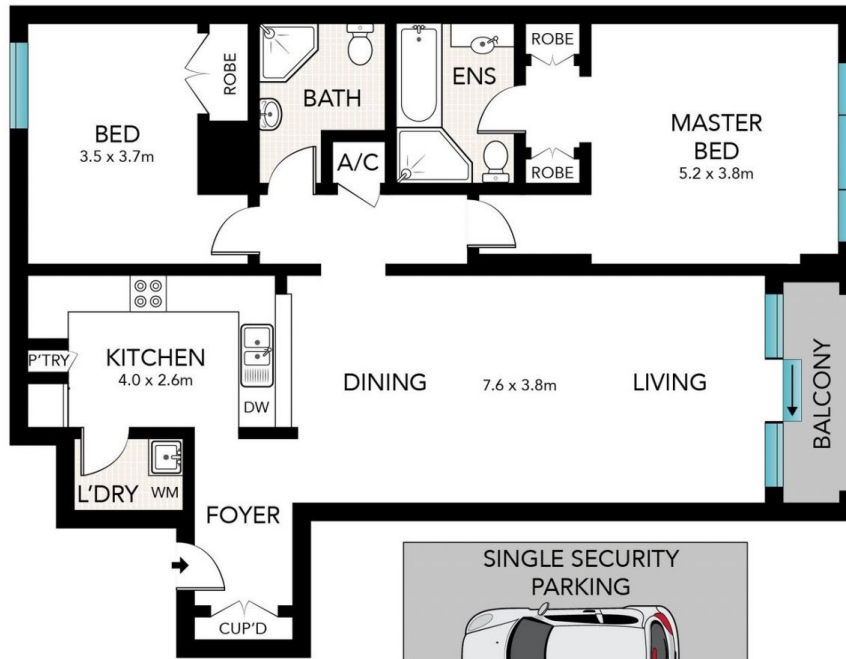
Building Size : 95 sqm
View : <https://www.sydneycoveproperty.com/lease/nsw/sydney-city/sydney/residential/apartment/6215190>

Features include:

- Large well proportioned kitchen, gas cooking
- Open plan living & dining leading to balcony
- Fantastic views over Hyde Park and the City
- Double bedrooms, master with walk-in robe
- Two large bathrooms, main containing bath tub
- Secure parking space, intercom entry & lift access
- Air-conditioning, internal laundry, secure parking
- Concierge, heated indoor pool, gym & sauna



Grant Ashby
02 9241 1288



(NOT IN POSITION)