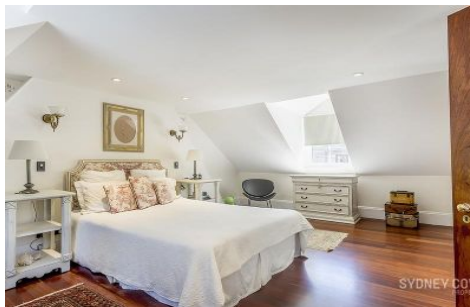


SYDNEY COVE

PROPERTY



94 Kent Street SYDNEY NSW

6 5 2

Offered for the first time is this one of a kind Millers Point terrace. Showcasing a truly unique connection between the grand heritage of old and the latest in tasteful modern styling, coupled with master craftsmanship, the tone is set for an enviable lifestyle that the entire family can enjoy. Spanning across three sun drenched levels, no expense has been spared with a stunning renovation & newly created extension. This terrace brings the size and accessibility of suburban living into the heart of urban Sydney

View : <https://www.sydneycoveproperty.com/lease/nsw/sydney-city/sydney/residential/terrace/6215162>



Grant Ashby
02 9241 1288

Key Points

- ? Oversized & open living and dining rooms with fireplace
- ? Flooring including Australian Cedar & Blackbutt timbers
- ? Grand kitchen w/ granite benchtop & artistic splashback
- ? Rear family room overlooking hanging garden courtyard

<https://www.sydneycoveproperty.com>