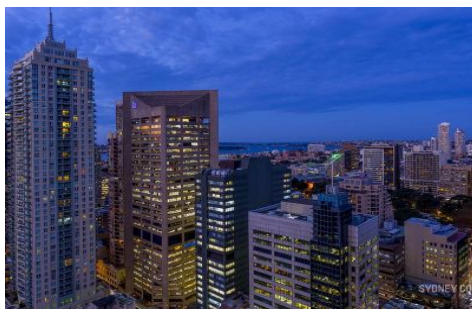


SYDNEY COVE

PROPERTY



93 Liverpool Street SYDNEY NSW

2 2 1

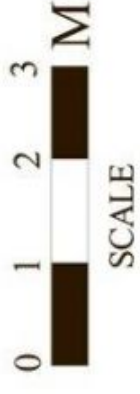
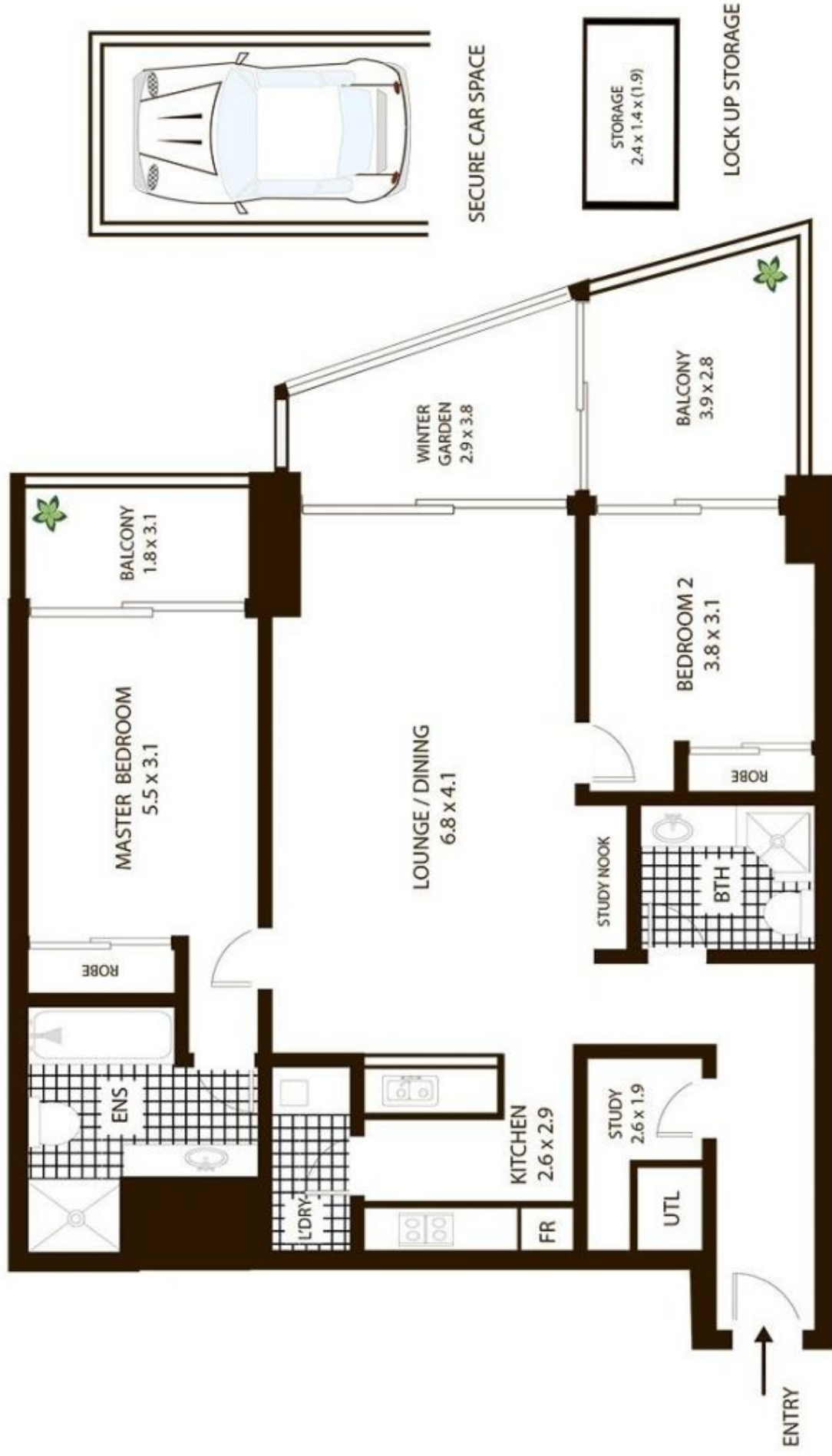
Featuring a practical floor plan, this remarkable two bedroom apartment offers breathtaking 180 degree views of Sydney's incredible city and Harbour. This apartment is situated in the prestigious World Tower and offers the complete lifestyle with cafes, restaurants, shopping and parks at your doorstep.

- East facing w/ 180 degree city & Harbour views from bedrooms & living area
- Fabulous winter garden and large outdoor entertaining balcony
- Modern galley kitchen with stone bench tops, in immaculate condition
- Practical floor plan w/ 2 separate private bedrooms on each side of living area
- Secure basement parking with separate storage cage, two modern bathrooms

View : <https://www.sydneycoveproperty.com/sale/nsw/sydney-city/sydney/residential/apartment/6215156>



Monique Lavers
82593333



91 Liverpool St, Sydney

All measurements are approximate only. Plan is provided as an indication of layout