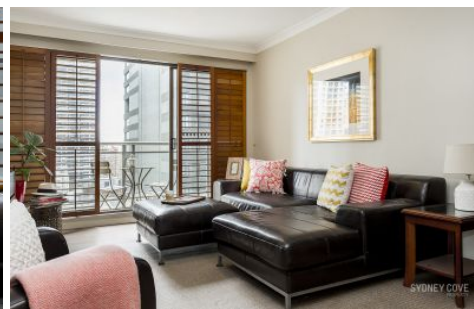


# SYDNEY COVE

PROPERTY



**281 Elizabeth Street Sydney NSW**

2 2 1

Furnished apartment located in 'Regency Hyde Park' which offers all the essentials for a busy lifestyle including concierge, pool, spa, sauna and gymnasium. Convenient living extends beyond the building with cafes, restaurants, Hyde Park and supermarket at your doorstep.

**View :** <https://www.sydneycoveproperty.com/lease/nsw/sydney-city/sydney/residential/apartment/6215118>

## Key Points

- \* Large and modern kitchen with gas cooking
- \* Open plan living & dining leading to balcony
- \* Double bedrooms, master with walk-in robe
- \* Two large bathrooms, one with bath tub
- \* Secure parking space and intercom entry
- \* Air-conditioning & internal laundry
- \* Concierge, large indoor pool, gym & sauna

<https://www.sydneycoveproperty.com>