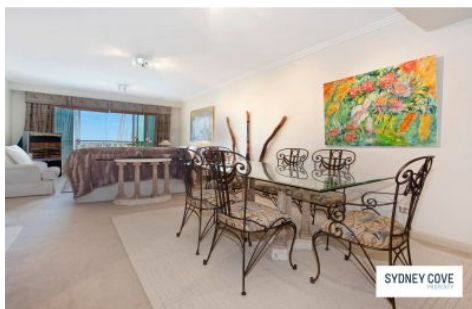


SYDNEY COVE

PROPERTY



68 Market Street Sydney NSW

2 2 1

Furnished two bedroom apartment located directly above the international Swissotel, on the corner of George & Market Street, with neighbours including the State Theatre and Queen Victoria building. These apartments are separate and exclusive from the hotel; however, many hotel facilities are available to residents.

View : <https://www.sydneycoveproperty.com/lease/nsw/sydney-city/sydney/residential/apartment/6215116>

Key points:

- * Great sized bedrooms, built in wardrobes
- * Fully equipped kitchen & quality appliances
- * Elegant marble bathroom, internal laundry
- * Balcony with city views, ducted air conditioning
- * Heated pool and spa, room service available