

SYDNEY COVE

PROPERTY



20 Pelican Street Surry Hills NSW

2 2 1

Experience sophisticated living at its finest in this stunning two bedroom apartment located on the penthouse level of the award winning development 'Monument'.

- Expansive north facing living & dining area, terrace balcony off main bedroom
- Floor to ceiling windows capture Opera House & city views to best advantage
- Two spacious bedrooms both with built in robes, two modern tiled bathrooms
- Galley kitchen, intercom, internal laundry, car space and separate storage cage
- Architecturally designed building by renowned Melbourne firm Wood/Marsh
- Close proximity to Oxford Street, Hyde Park, Stanley Street, shops and cafes
- Concierge, glass edged pool, gymnasium, manicured

View : <https://www.sydneycoveproperty.com/sale/nsw/eastern-suburbs/surry-hills/residential/apartment/6215111>



Monique Lavers
82593333

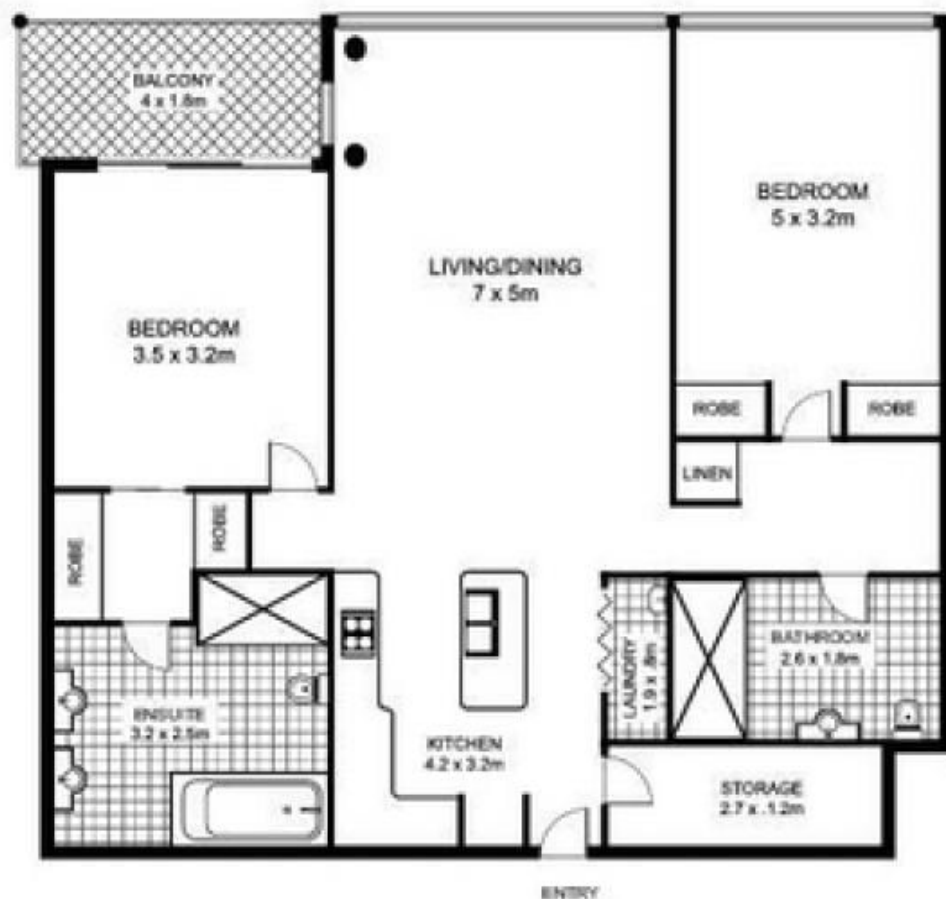
<https://www.sydneycoveproperty.com>

1504/20 Pelican St, DARLINGHURST

SCALE 



* note
all measurements are approximate only.
Plan is provided only as an indication of layout.



PLANS BY SURROUNDPIX
PHONE: 1300 30 32 40