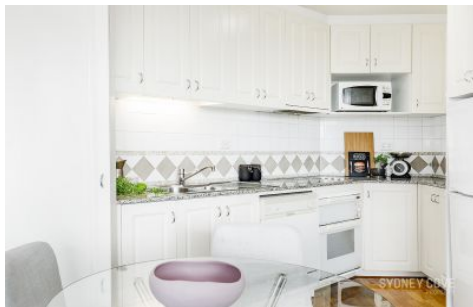


# SYDNEY COVE

PROPERTY



## 22 Sir John Young Crescent Woolloomooloo NSW

1 1

Offering amazing convenience and a superb Sydney lifestyle, this bright and airy one bedroom apartment is located in the sought-after 'Domain Apartments', centrally located between the CBD and prestigious Eastern Suburbs.

- Freshly painted, new carpet and ready to move in
- Only a 10-minute walk to harbour foreshores & CBD
- Features and South Easterly aspect with district views
- Well proportioned, reverse cycle air-conditioning
- Gym, Spa and Sauna, roof-top with water views
- Secure building with Concierge and lift access
- The Domain provides a beautifully appointed foyer

Strata:\$980.40 p/q

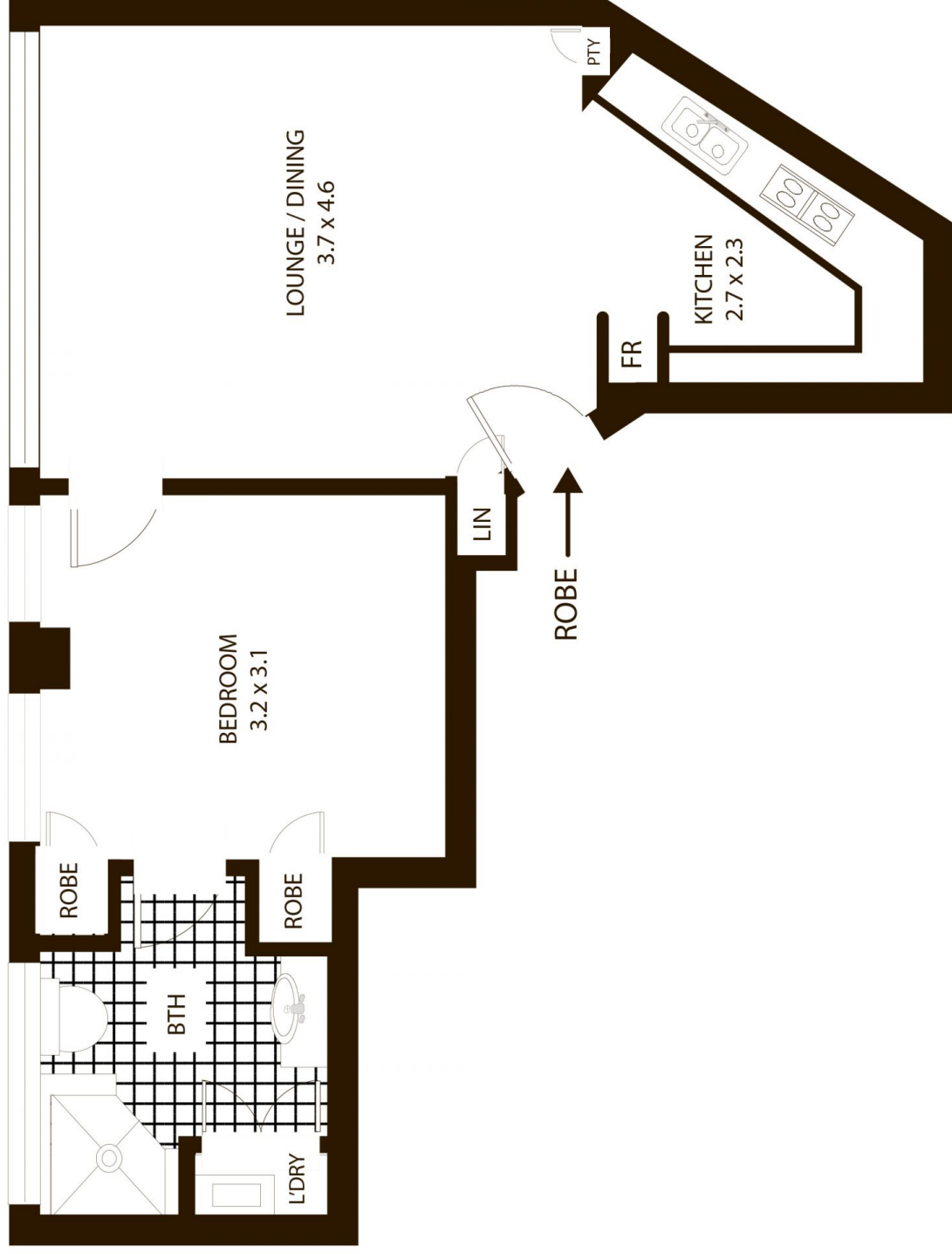
To enquire or inspect please contact Bryn on 0423 663 663

**View :** <https://www.sydneycoveproperty.com/sale/nsw/sydney-city/woolloomooloo/residential/apartment/6215043>



**Bryn Fowler**  
02 8259 3333

<https://www.sydneycoveproperty.com>



## 708/22 Sir John Young Cres, Woolloomooloo

All measurements are approximate only. Plan is provided as an indication of layout

