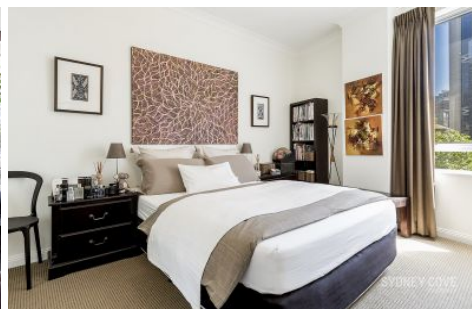


SYDNEY COVE

PROPERTY



38 Bridge Street Sydney NSW

1 1

SOLD BY BRYN FOWLER 0423 663 663

Boasting tranquil views over tree-lined Macquarie Place Park, and plenty of natural light this apartment is definitely one to inspect. Positioned on level 12 of the contemporary, sought-after Bridgeport building, located on the corner of Loftus and Bridge Streets, this light & airy one bedroom unit is only moments to the Rocks, Circular Quay, and the Northern city's finest shopping bars and restaurants. An ideal city residence, investment or pied a terre.

Type : Apartment

View : <https://www.sydneycoveproperty.com/sale/nsw/sydney-city/sydney/residential/apartment/6214998>

- *Tranquil views over Macquarie Place Park
- *An abundance of natural light, ducted a/c
- *Very well presented and in great condition
- *Popular floorplan, rarely available to own
- *Walk to Opera House and Sydney Harbour



Bryn Fowler
02 8259 3333

[For full version visit the website](https://www.sydneycoveproperty.com)

<https://www.sydneycoveproperty.com>