

# SYDNEY COVE

PROPERTY



**1104/433 Kent Street Sydney NSW**

**1 1**

**SOLD BY BRYN FOWLER 0423 663 663**

Stress free investment, set and forget. This immaculately presented serviced apartment of 30m2 in Mantra on Kent is currently returning a fantastic **GUARANTEED NET** income of \$15,584.76 per annum. Perfect Superfund option. The next CPI review is in September 2017. No outgoings to pay - Mantra on Kent pay outgoings (Strata, Water, and Council). Exceptional Mantra Group operates Hotels, Resorts and Apartments throughout Australia, New Zealand & Indonesia predominantly frequented by business travellers as well as holidaymakers.

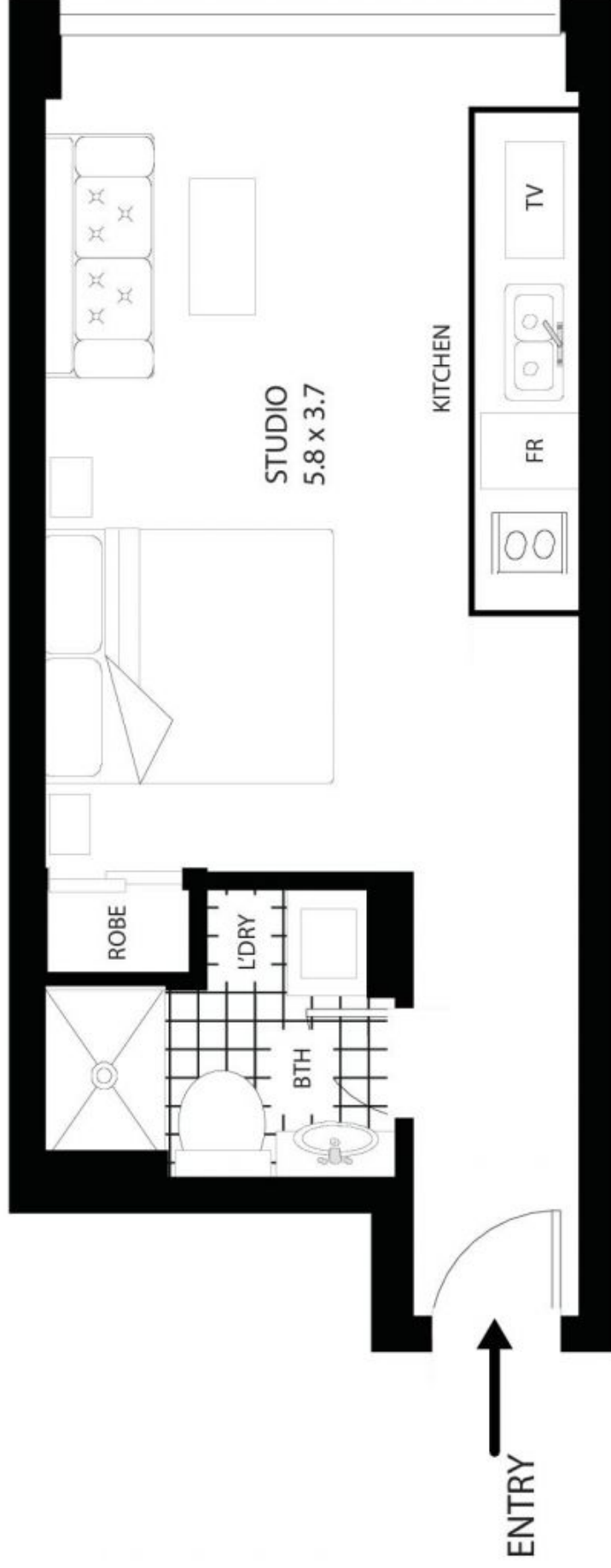
**View :** <https://www.sydneycoveproperty.com/sale/nsw/sydney-city/sydney/residential/apartment/6214916>



**Bryn Fowler**  
**02 8259 3333**

- Rental income paid to owner regardless of occupancy
- Building operating as serviced apartments since 1999
- Spacious, sleek, and well-proportioned design
- Fantastic city, west facing views over to Darling Harbour
- Modern kitchen, bathroom & interiors, fully equipped

<https://www.sydneycoveproperty.com>



# 1104/433 Kent St Sydney

All measurements are approximate only. Plan is provided as an indication of layout



SCALE