

SYDNEY COVE

PROPERTY



25/104-118 Clarence Street Sydney NSW

1 1

SOLD BY BRYN FOWLER 0423 663 663

A rare opportunity to own one of only 40 apartments in the boutique, Clarence House building, near the corner of King and Clarence Streets. Featuring a Heritage facade and own open-air tennis court combined with a mid-city location Clarence House is perfectly positioned to enjoy a fantastic cosmopolitan lifestyle. Prime location near Wynyard station, Darling Harbour, QVB and close to endless shops, restaurants, cafes and bars.

- Quiet, spacious light & airy interiors, air-conditioning
- Good sized bedroom with built-in wardrobes
- Completely renovated throughout, including modern kitchen & bathroom
- Internal laundry with washing machine and dryer

Type : Apartment

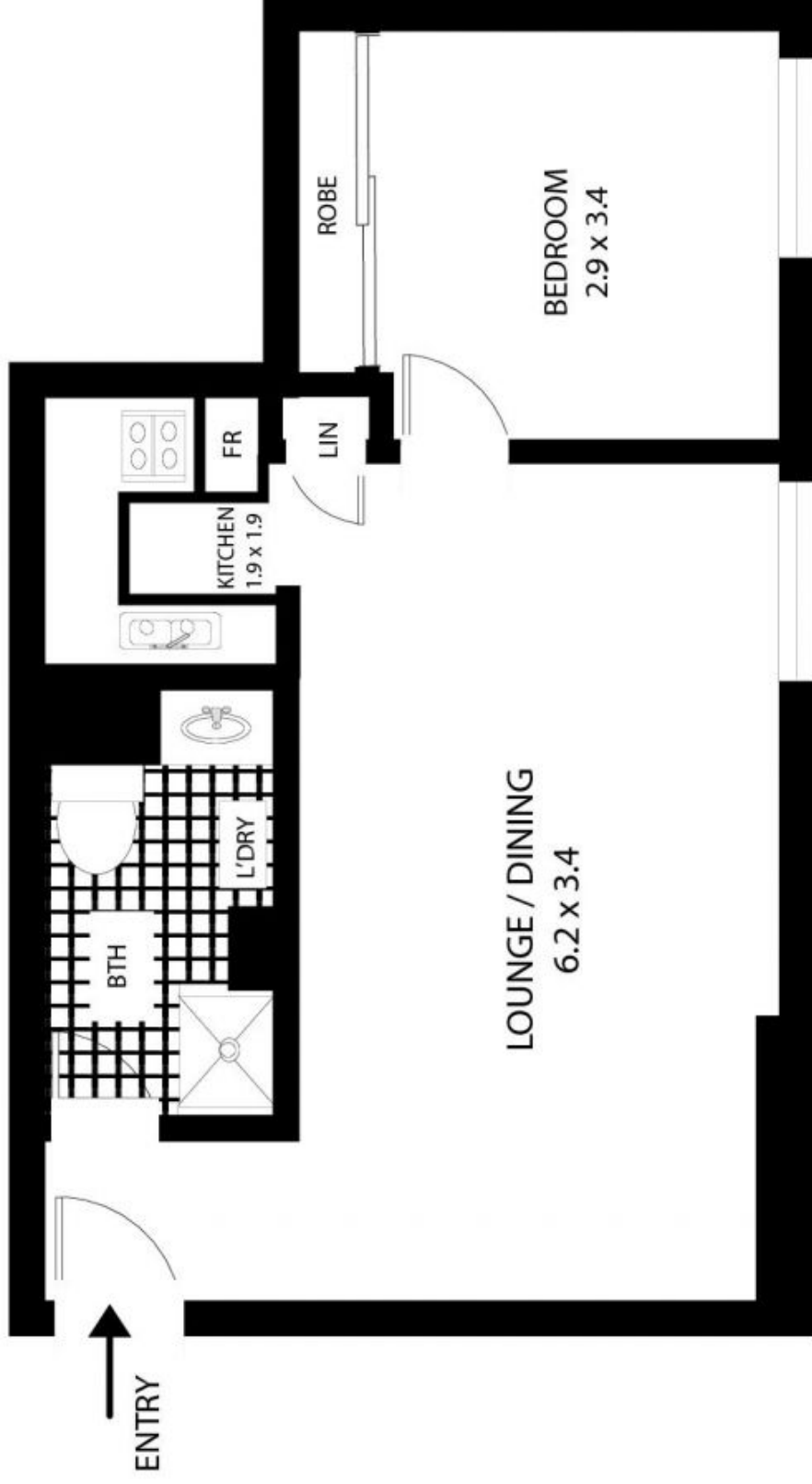
View : <https://www.sydneycoveproperty.com/sale/nsw/sydney-city/sydney/residential/apartment/6214836>



Bryn Fowler
02 8259 3333

[For full version visit the website](https://www.sydneycoveproperty.com)

<https://www.sydneycoveproperty.com>



25/104 Clarence St Sydney

All measurements are approximate only. Plan is provided as an indication of layout



SCALE