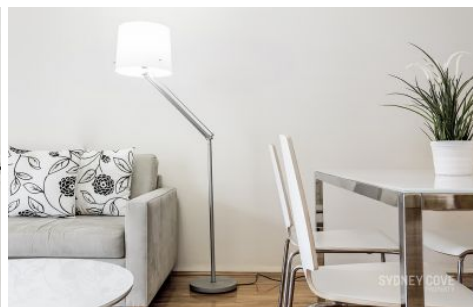


SYDNEY COVE

PROPERTY



25 Market Street Sydney NSW

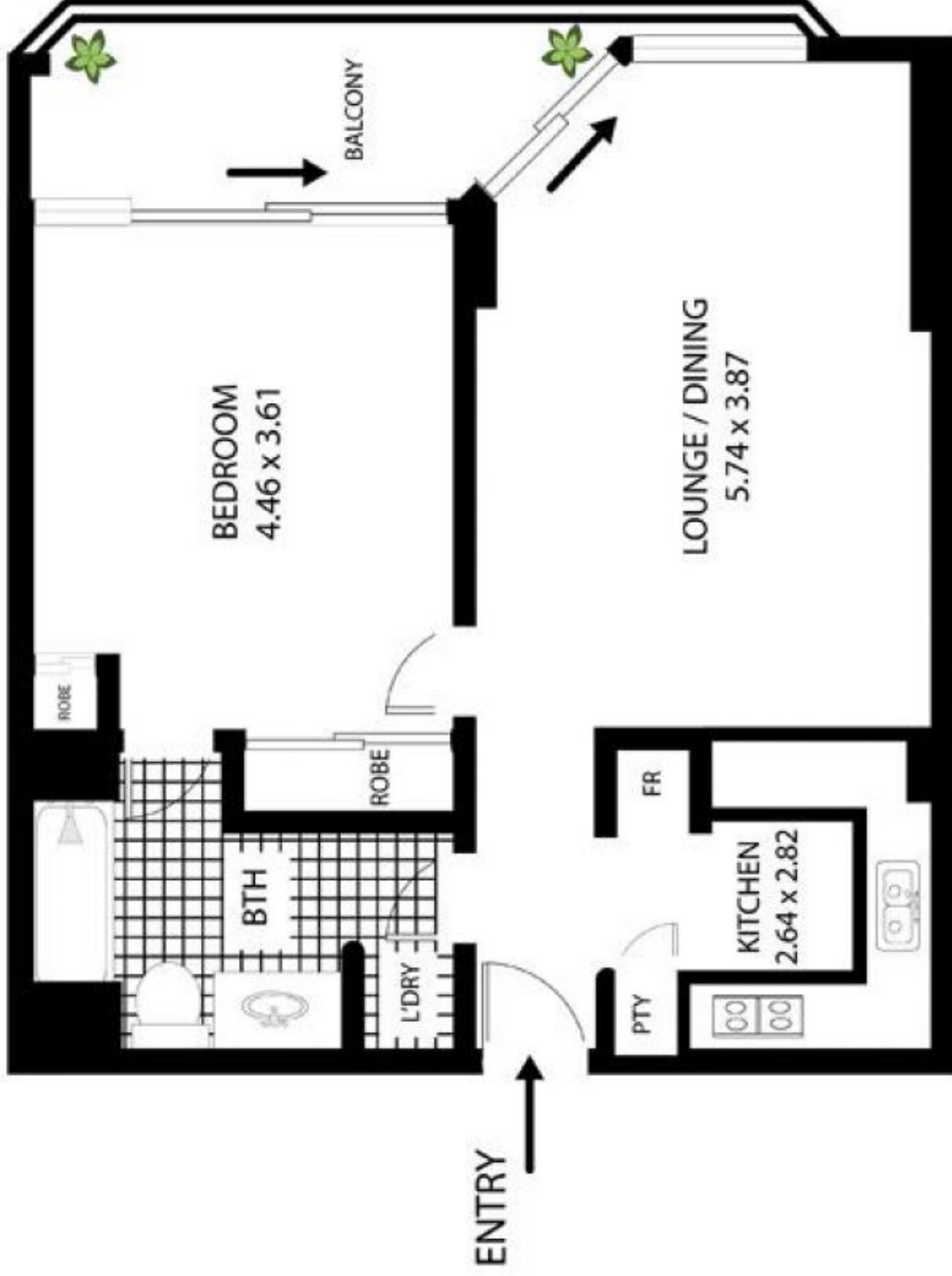
1  1 

Enjoying an outlook overlooking Cockle Bay and a central location, this stunning apartment is ideal for those with a busy lifestyle who desire the convenience of city living. Located within the easily accessible building The Berkely, and within minutes to all local bars, restaurants and public transport.

View : <https://www.sydneycoveproperty.com/lease/nsw/sydney-city/sydney/residential/apartment/6214807>

Key Points:

- * Updated kitchen with high quality finishes
- * Good sized bedroom with built in wardrobe
- * Excellent condition and with timber floors
- * Generously sized entertainers balcony
- * Within minutes to local bars and restaurants
- * Immediate access to public transport



25 Market St Sydney

All measurements are approximate only. Plan is provided as an indication of layout



SCALE