

SYDNEY COVE

PROPERTY



603/281 Elizabeth Street Sydney NSW

2 2 1

SOLD BY BRYN FOWLER 0423 663 663

Move in and enjoy stunning views of Hyde Park every day, and the fabulous lifestyle provided by living in such an amazing city location: the coveted and tightly-held Regency Hyde Park.

Type : Apartment

Price : \$ 1,280,000

View : <https://www.sydneycoveproperty.com/sale/nsw/sydney-city/sydney/residential/apartment/6214639>

Close to everything, cafes, bars, theatres, museums and restaurants, this apartment comes to the market for the first time since originally purchased off the plan.

Key points:

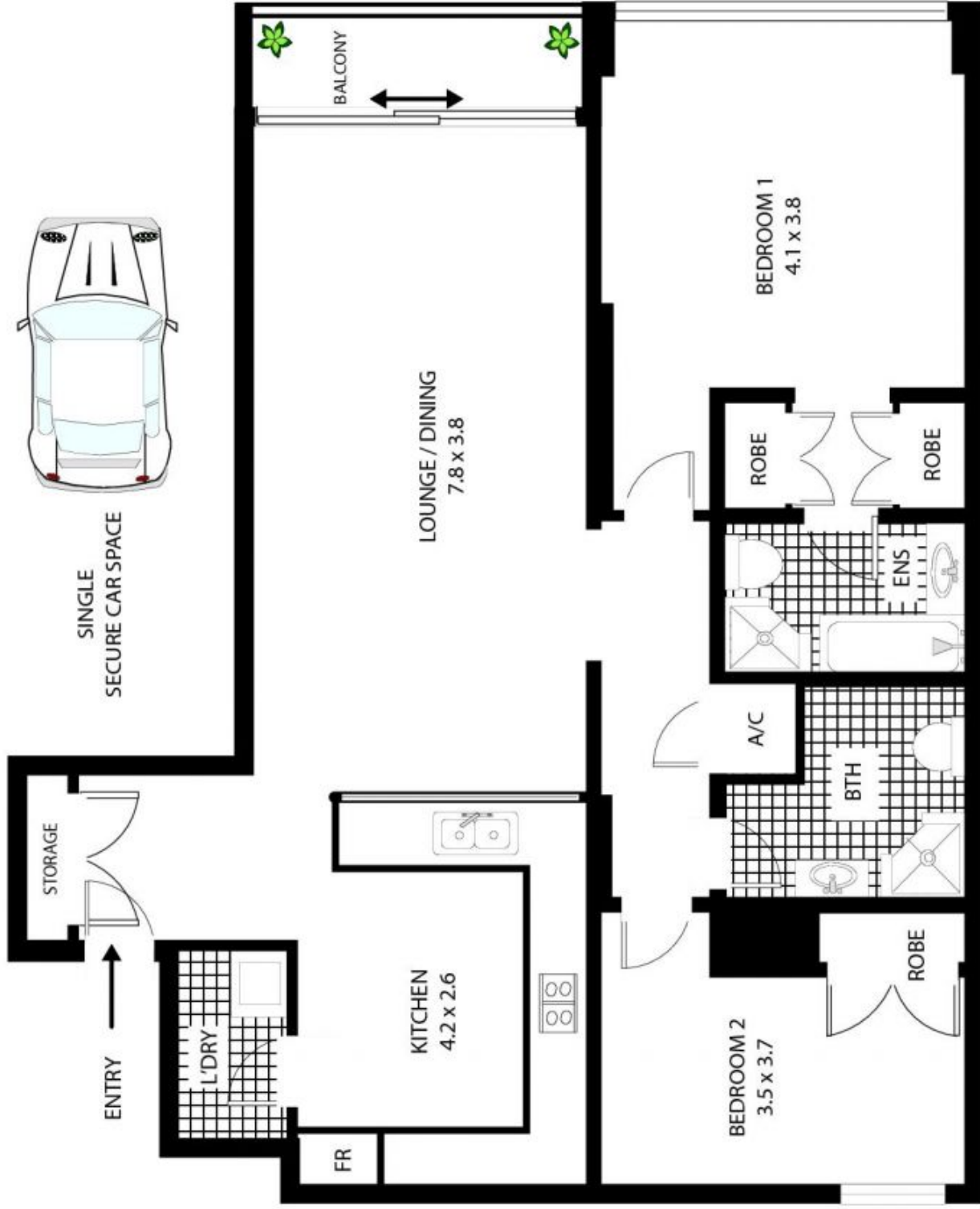
- * Large open-plan living & dining area
- * Covered balcony overlooking Hyde Park
- * Spacious master bedroom with walk-thru robe



Bryn Fowler
02 8259 3333

[For full version visit the website](https://www.sydneycoveproperty.com)

<https://www.sydneycoveproperty.com>



SINGLE
SECURE CAR SPACE



603/281 Elizabeth St Sydney

All measurements are approximate only. Plan is provided as an indication of layout