

# SYDNEY COVE

PROPERTY



## 5-11 Pyrmont Bridge Road Camperdown NSW

1 1

Located in the almost new 'DNA' complex, this unfurnished courtyard apartment offers, space comfort and style. Located right on the city fringe, you get the best of both worlds. Head downtown to the city, or the theatres and restaurants in Chinatown. Eat this or shop that in neighbouring Newtown, Glebe, Leichhardt or Broadway. The area's mix of gritty inner-city hubs and bohemian-designer-foodie-creative forms an essential part of Sydney's new urban DNA.

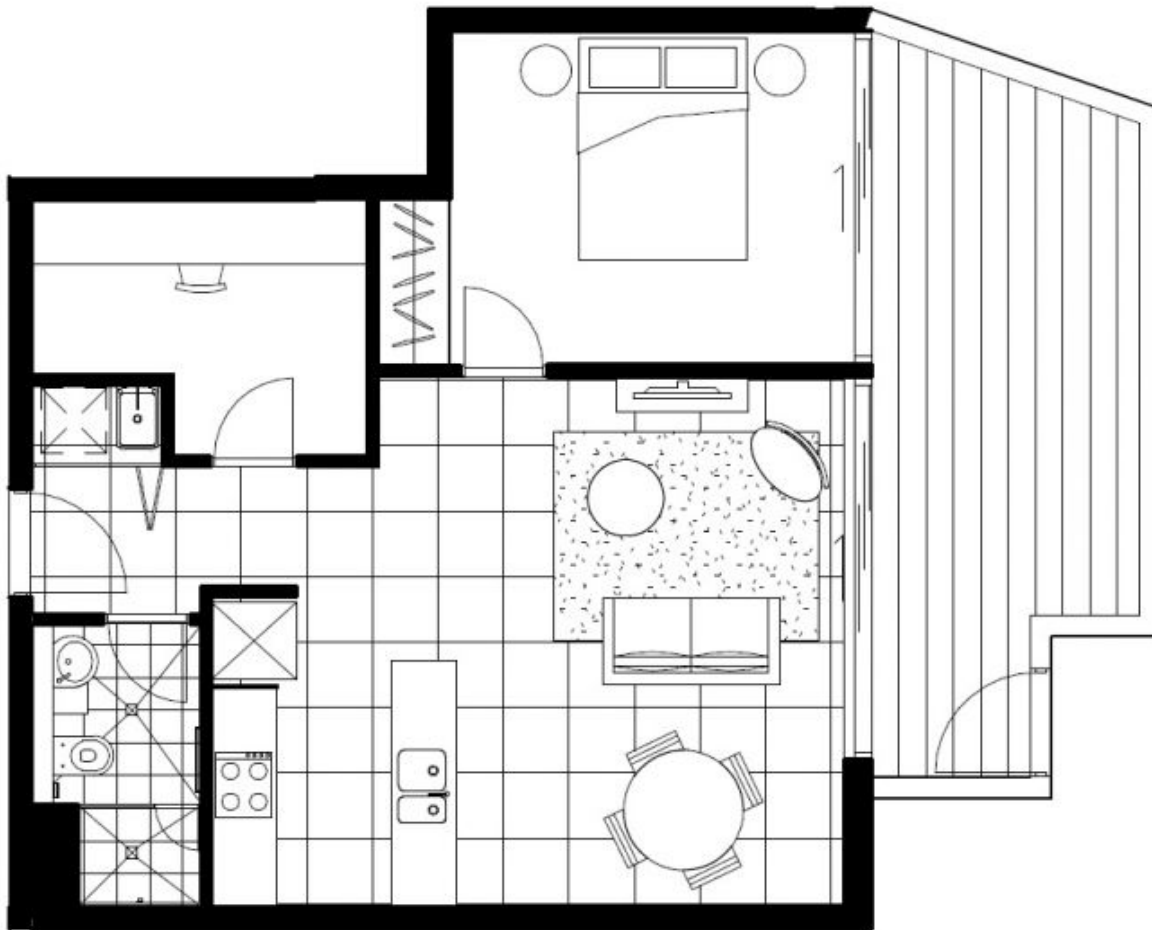
### Key Points:

- \* Very large open plan living are dining area
- \* One bedroom + study, bedroom with BIR
- \* Sleek, contemporary bathroom, quality finish
- \* Funky ultra modern kitchen with unique finish
- \* Large private courtyard leading to BBQ area

**View :** <https://www.sydneycoveproperty.com/lease/nsw/inner-west/camperdown/residential/apartment/6214546>



**Grant Ashby**  
02 9241 1288



**sydney cove**  
PROPERTY