

SYDNEY COVE

PROPERTY



222 Sussex Street SYDNEY NSW

2 🏠 2 🚗

Rare opportunity to buy in the sought-after but tightly held Astoria Tower, positioned in unquestionably one of the best locations in the Sydney CBD.

Type : Apartment

View : <https://www.sydneycoveproperty.com/sale/nsw/sydney-city/sydney/residential/apartment/6214276>

This apartment is whisper quiet and offers a very generous floorplan. An ideal home and ready to move straight in with nothing to do or a outstanding investment opportunity with strong rental returns, low outgoings and assured future capital growth. Potential rent of \$780-\$800 per week.

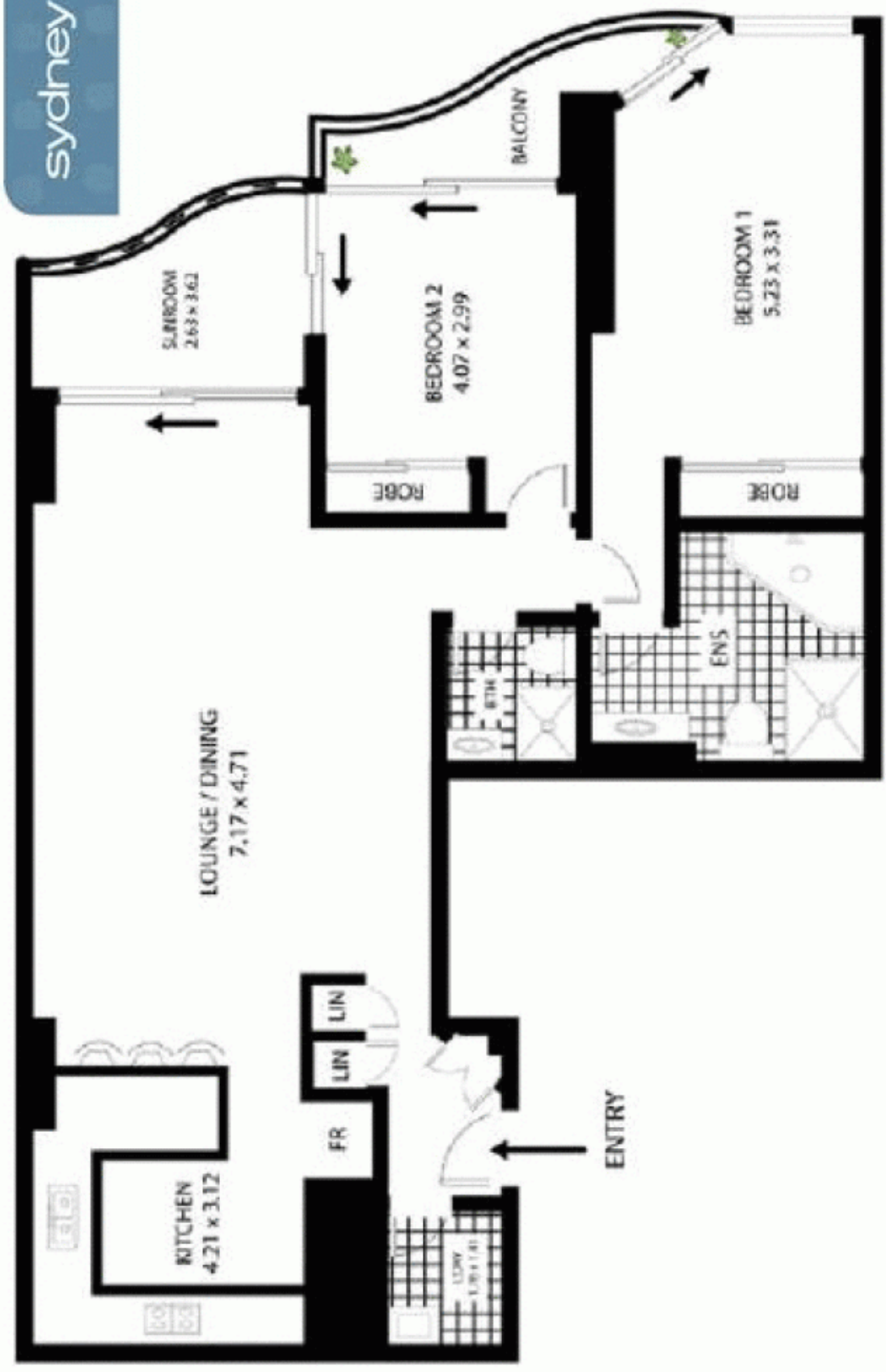
Astoria Tower offers residents the opportunity to embrace the ultimate in city life & its many conveniences. Darling Harbour, Cockle Bay and its many attractions are just across the road, and you will be just an easy stroll to Pitt Street Mall, Sydney Westfield, Woolworths, Queen Victoria



Bryn Fowler
02 8259 3333

[For full version visit the website](https://www.sydneycoveproperty.com)

<https://www.sydneycoveproperty.com>



222 Sussex St Sydney



All measurements are approximate only. Plan is provided as an indication of layout