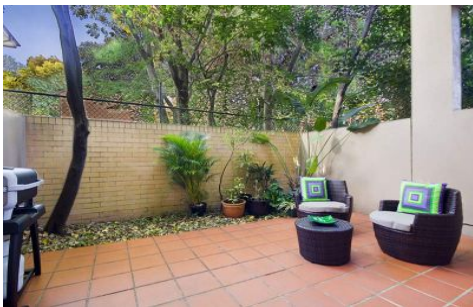


# SYDNEY COVE

PROPERTY



11/18-20 Newton Street ALEXANDRIA NSW

2 1 1

Spacious modern townhouse located in an increasingly popular city fringe locale, only moments to cafes, shops, local bars and restaurants with easy access to the CBD.

This property is split over two levels and features a practical, generous floorplan providing an easy, convenient, low maintenance and relaxed lifestyle that is sure to impress.

An entertainers delight with front and rear courtyards (north facing), spacious open plan living areas and is peacefully positioned back from the street in a small tightly held security complex.

The property offers:

[For full version visit the website](#)

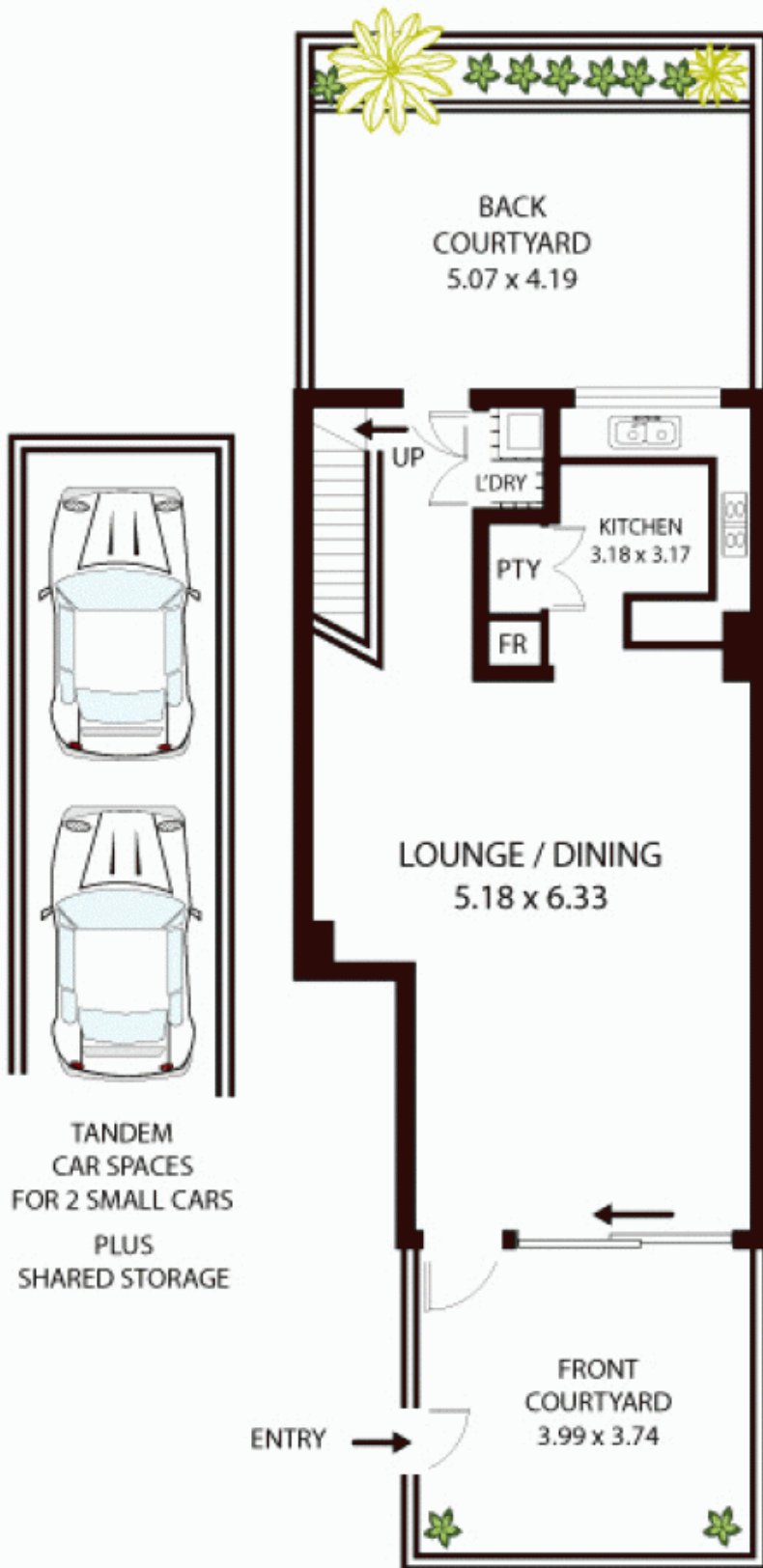
**Type** : Townhouse

**View** : <https://www.sydneycoveproperty.com/sale/nsw/eastern-suburbs/alexandria/residential/townhouse/6214262>

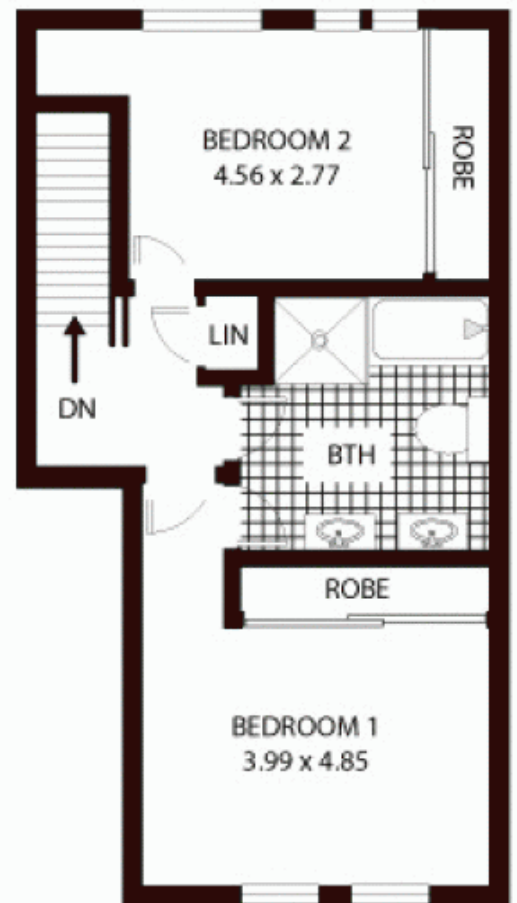


**Bryn Fowler**  
02 8259 3333

# ENTRY LEVEL



# UPPER LEVEL



## 11/18-20 Newton St Alexandria

All measurements are approximate only. Plan is provided as an indication of layout

**sydney cove**  
PROPERTY

