




# SYDNEY COVE

PROPERTY



26/1 Macquarie Street SYDNEY NSW

1  2  1 

With a perfect position on level 2 of Bennelong 1 and an intimate, picturesque harbourside view this apartment offers both a lifestyle of luxury and convenience as well as a sound long-term investment choice with assured capital growth to the discerning buyer.

- Light filled, superbly appointed and well proportioned throughout
- Flawless world class views of the Harbour Bridge, Circular Quay
- Spacious living areas with floor to ceiling glass
- Stylish gas kitchen with marble benchtops & Gaggenau appliances
- Marble bathroom with spa and twin basins, powder room
- Large bedroom with built-ins and access to balcony

**Type** : Apartment

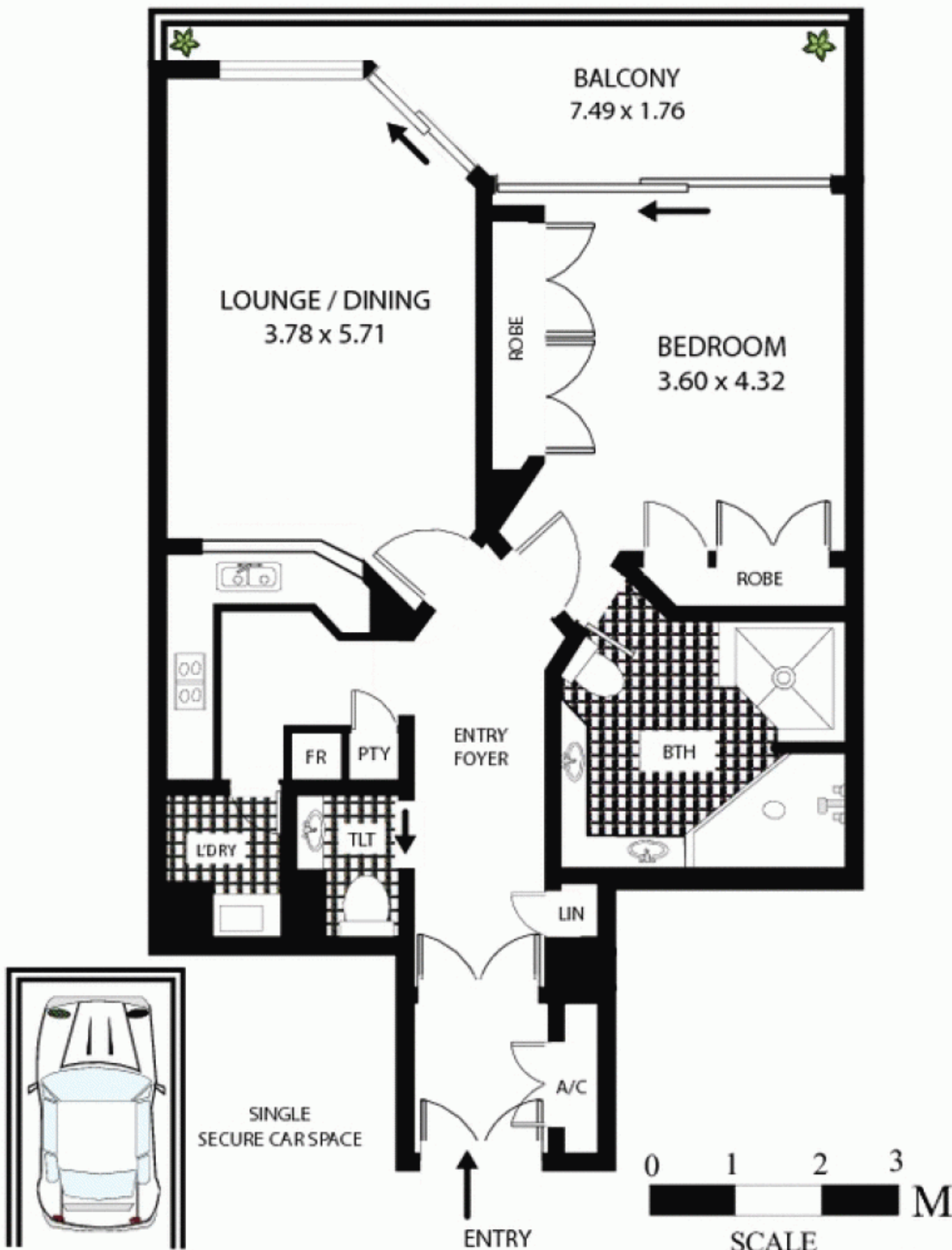
**View** : <https://www.sydneycoveproperty.com/sale/nsw/sydney-city/sydney/residential/apartment/6214245>



**Bryn Fowler**  
02 8259 3333

[For full version visit the website](https://www.sydneycoveproperty.com)

<https://www.sydneycoveproperty.com>



# 26/1 Macquarie St Sydney

All measurements are approximate only. Plan is provided as an indication of layout.

**sydney cove**  
REAL ESTATE

