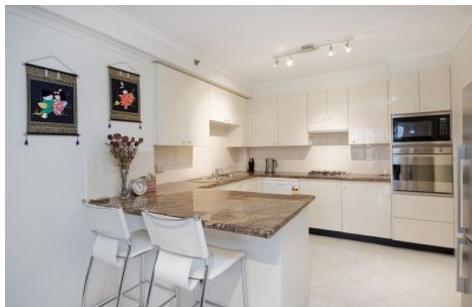
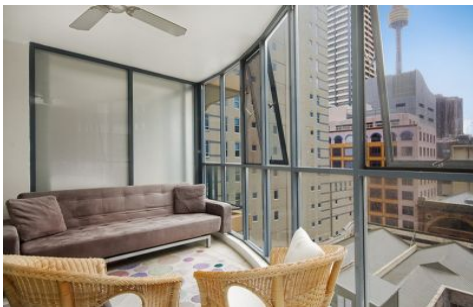


SYDNEY COVE

PROPERTY



43/222 Sussex Street SYDNEY NSW

2 2 1

SOLD BY BRYN FOWLER 0423 663 663

Immaculately presented two bedroom apartment now available in highly sought after and tightly held Astoria Tower.

Ideally positioned within an easy walk to Darling Harbor, Cockle Bay restaurants and bars, QVB, Town Hall this apartment will surely not last long!

Generous and practical in both size and floorplan, the apartment provides 113m2 of open plan living areas and great natural light throughout.

With a corner position and only four apartments per floor, privacy is also assured.

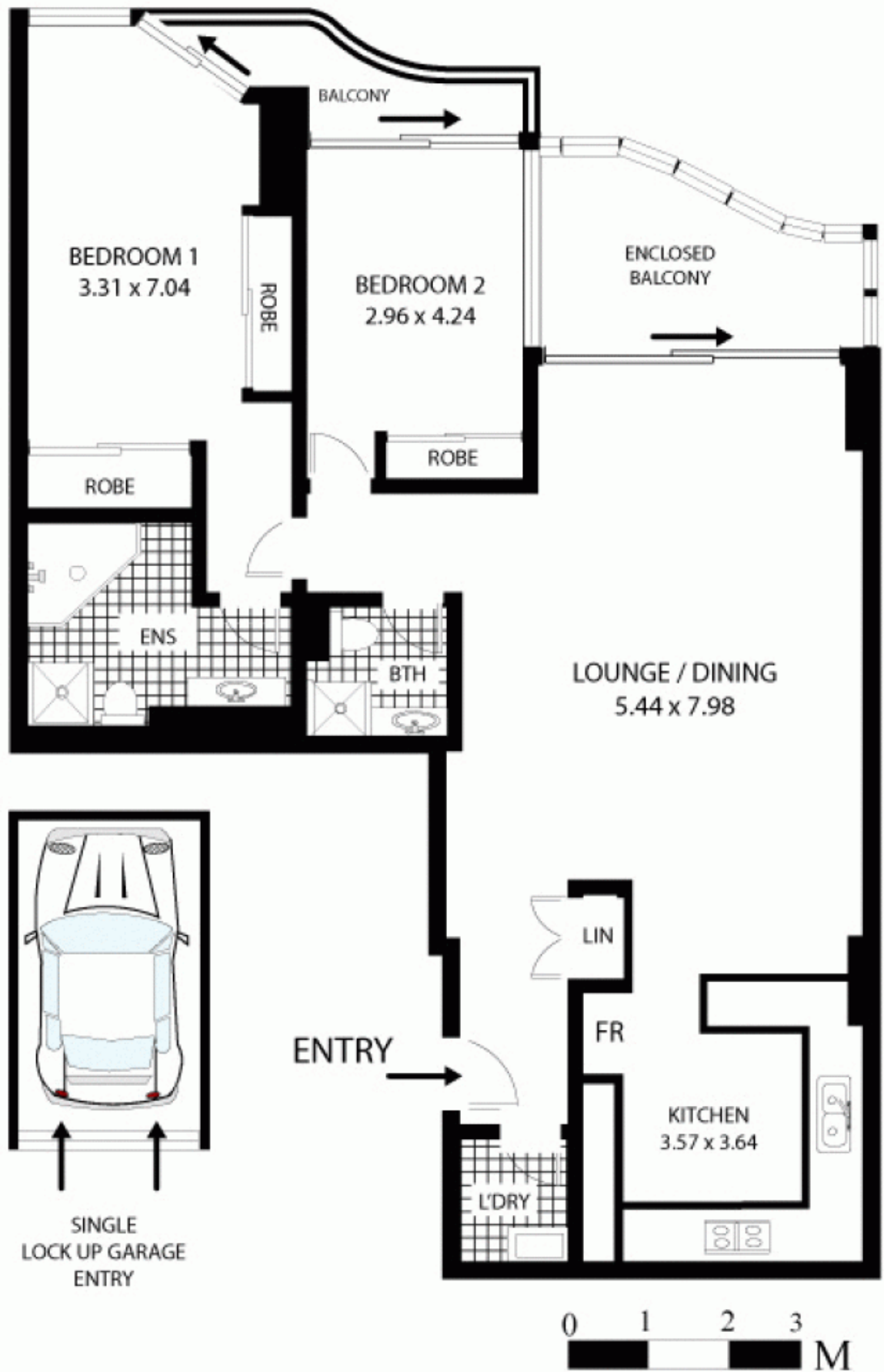
[For full version visit the website](https://www.sydneycoveproperty.com)

Type : Apartment

View : <https://www.sydneycoveproperty.com/sale/nsw/sydney-city/sydney/residential/apartment/6214229>



Bryn Fowler
02 8259 3333



43/222 Sussex St Sydney

All measurements are approximate only. Plan is provided as an indication of layout

sydney cove
PROPERTY

