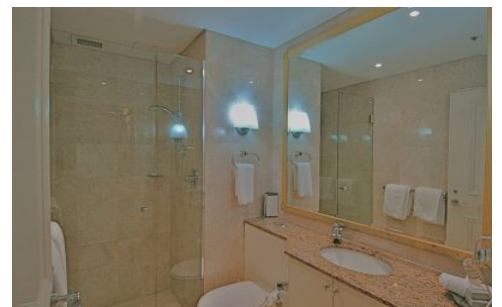
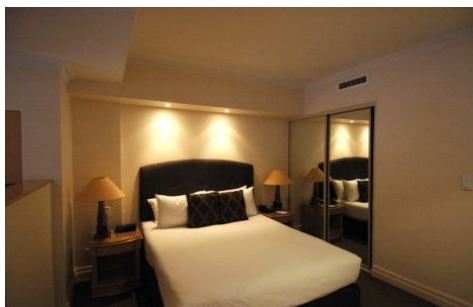


SYDNEY COVE

PROPERTY



705/2 Bond Street SYDNEY NSW

Investors will love the excellent returns, low outgoings and quality of this low maintenance style investment opportunity.

Currently professionally managed by The Mantra, this immaculate studio apartment is returning a fantastic \$24,227.03 per annum and the strata levy is only \$580 per quarter! Exceptional high yield with low outgoings, in a quality building a rare combination.

Ideal for investors seeking a superbly located investment property with a guaranteed income stream with no vacancy and no management fees to pay. Alternatively an ideal city pad to use while in town and rent out with great returns in between.

[For full version visit the website](https://www.sydneycoveproperty.com)

1 1

Type : Apartment

Price : \$ 385,000

View : <https://www.sydneycoveproperty.com/sale/nsw/sydney-city/sydney/residential/apartment/6214182>



Bryn Fowler
02 8259 3333

<https://www.sydneycoveproperty.com>