

# SYDNEY COVE

PROPERTY



**2 Bond Street SYDNEY NSW**

1 1 1

Rare opportunity to purchase a high level one bedroom apartment with study, parking and views in the Mantra one of only two apartments of this floorplan in the building.

**Type** : Apartment

**View** : <https://www.sydneycoveproperty.com/sale/nsw/sydney-city/sydney/residential/apartment/6214171>

Positioned high on the 13th floor in the sought after Mantra building on the corner of George & Bond Streets.

- \*One bedroom apartment with study, parking & views
- \*High level one of only two apartments of this floorplan
- \*Two balconies overlooking Australia Square and to George street
- \*Double bedroom with built-ins and own balcony
- \*Large study with foldout sofa bed, study desk & cupboard space
- \*Fully furnished & equipped, right down to linen and cutlery



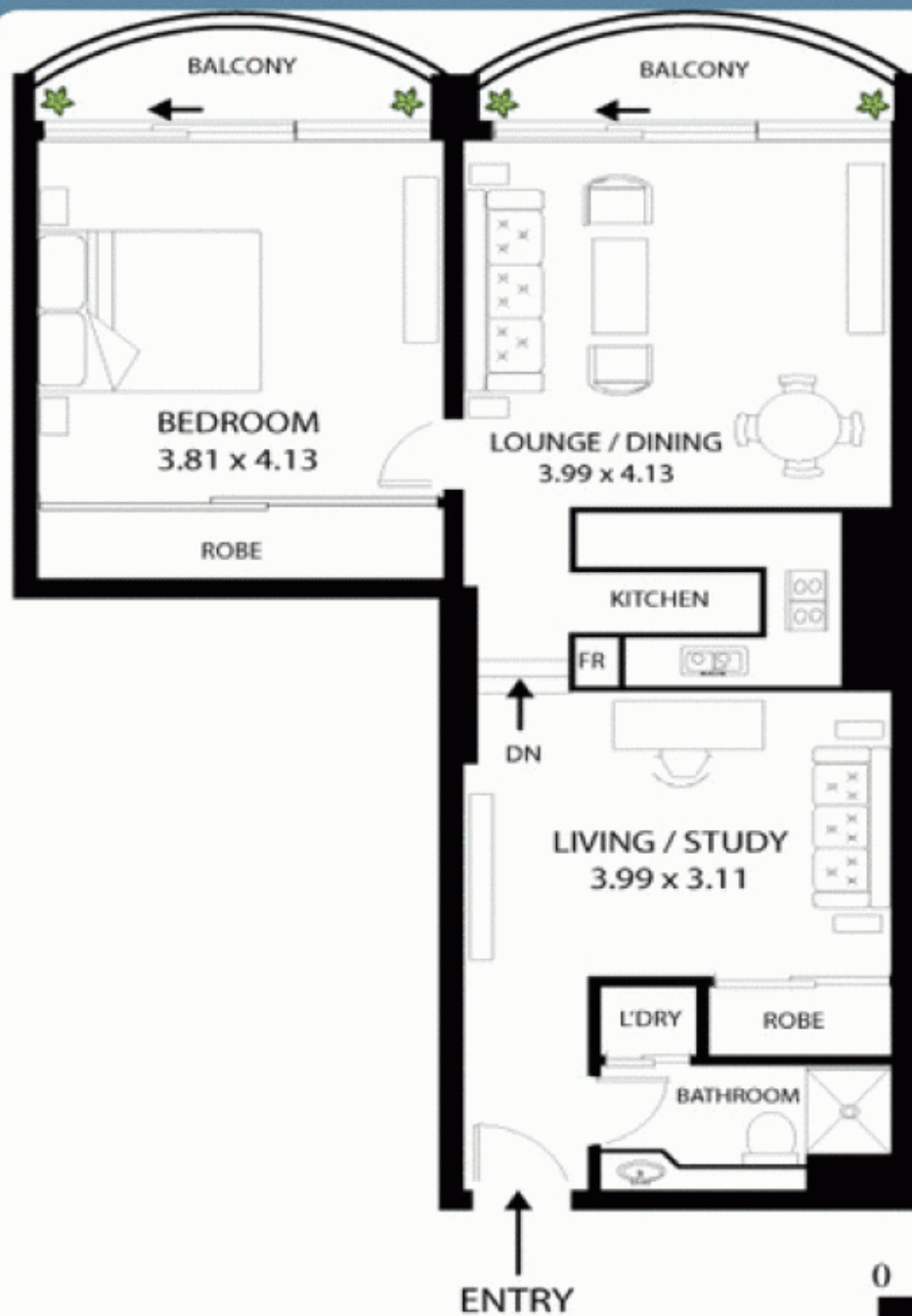
**Bryn Fowler**  
02 8259 3333

[For full version visit the website](https://www.sydneycoveproperty.com)

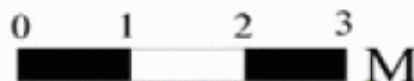
<https://www.sydneycoveproperty.com>

# FLOOR PLAN

1316/2 Bond Street, Sydney



SINGLE  
SECURE  
CAR SPACE



SCALE

## 1316/2 Bond St Sydney



All measurements are approximate only. Plan is provided as an indication of layout

Sydney Cove Property have, in preparing this information used our best endeavours to ensure that the information contained therein is true and accurate, but accept no responsibility and disclaim all liability in respect of any errors, inaccuracies or misstatements contained herein. All parties interested in any Sydney Cove Property product and /or service should make their own inquiries to verify the information contained herein. The content of this product or service is provided for information purposes only and while reasonable care is taken in its preparation, Sydney Cove Property does not guarantee or warrant the accuracy, reliability, completeness or currency of the information on this product or service or its usefulness in achieving any purpose.