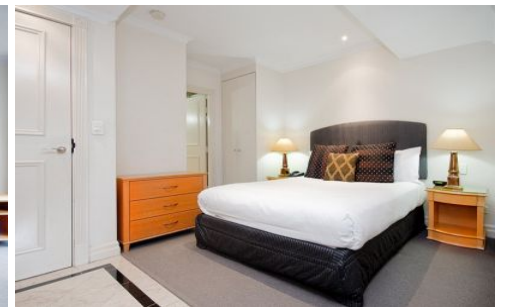
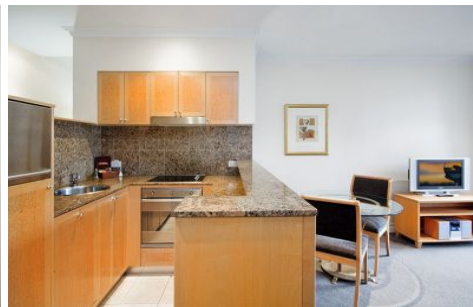


SYDNEY COVE

PROPERTY



2 Bond Street SYDNEY NSW

1 🏠 1 🛏

Investors will love the excellent returns, low outgoings and quality of this low maintenance style investment opportunity.

Type : Apartment

View : <https://www.sydneycoveproperty.com/sale/nsw/sydney-city/sydney/residential/apartment/6214160>

Currently professionally managed by The Mantra, this immaculate studio apartment returns \$25,829.28 per annum currently. Strata levy is only \$580 per quarter.

Ideal for investors seeking a superbly located investment property with a guaranteed income stream with no vacancy and no management fees to pay.

This great apartment offers great flexibility to owners:

- Leasing under the hotel scheme
- Leasing via reputable agency



Bryn Fowler
02 8259 3333

[For full version visit the website](https://www.sydneycoveproperty.com)

<https://www.sydneycoveproperty.com>