




# SYDNEY COVE

PROPERTY



**404/20 Pelican Street DARLINGHURST NSW**

2  2  1 

Move in and enjoy the cosmopolitan lifestyle in the Iconic Monument complex with the best of everything at your door step vibrant Oxford Street, fantastic local restaurants, cafes & nightlife, and only a short walk to the CBD!

**View** : <https://www.sydneycoveproperty.com/sale/nsw/eastern-suburbs/darlinghurst/residential/apartment/6214144>

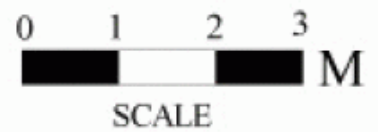
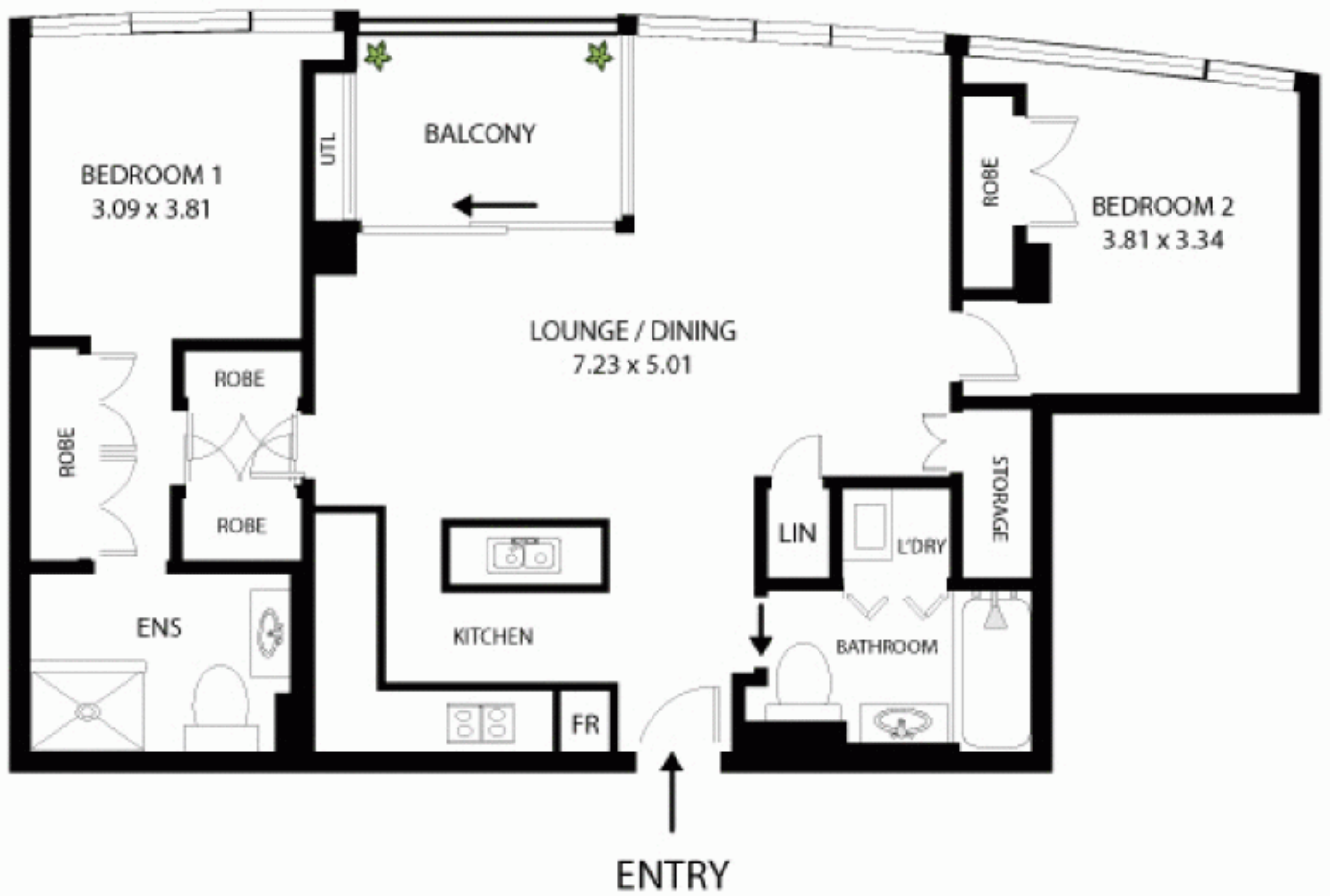
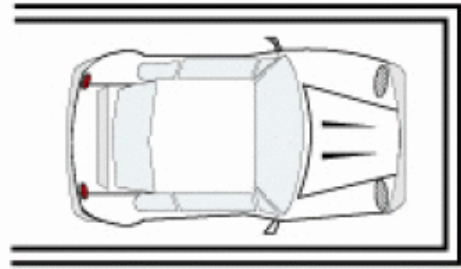
Intelligently designed by award winning architects Wood Marsh (winners of 23 RIA Awards for excellence) and developed by Multiplex, the perfectly positioned Monument offers its residents a modern resort style living with stylish, luxuriously appointed accommodation.

- City & Centre Point views from living areas and bedrooms
- Immaculately presented, with high quality appointments
- Well proportioned throughout with spacious living areas and air-conditioning
- Two chic bathrooms, main bathroom with bath
- Secure undercover car space with remote control access



**Bryn Fowler**  
**02 8259 3333**

SINGLE  
SECURE  
CAR SPACE



# 404/20 Pelican St Surry Hills

All measurements are approximate only. Plan is provided as an indication of layout

